

Station News

Georgia Tech Engineering Experiment Station

VOLUME II NUMBER 6

FEBRUARY-MARCH, 1981

High-Technology Center Underway In Ireland

Under the direction of EES Senior Staff Member **Dan O'Neil**, Georgia Tech will develop and manage a new high-technology research center at Limerick, Ireland. To be known as the European Research Institute of Ireland (ERII), the center is expected to accelerate the research and development component of the Irish industrial base. Through its involvement in ERII, Georgia Tech will gain a valuable foothold in the European contract research market. Tech President **Joseph M. Pettit** will serve on ERII's steering committee and board of directors.

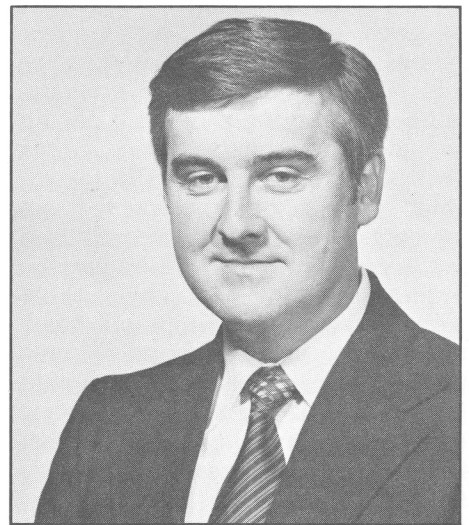
This important association between Tech and the Irish Industrial Development Authority (IDA) was announced at a press conference at Georgia Tech on March 12. A special guest at the conference was Ireland's Minister of Industry, Commerce and Tourism, **Desmond O'Malley**. O'Malley participated in the announcement to the press with: Tech President **Joseph M.**

Pettit; IDA Director of Service Industries **Jerry Kelley**; IDA Executive Director **John Lyons**; **Dan O'Neil**; and **Ray Moore**, director of research public relations. A graduate of Trinity College in Dublin and the prime mover behind this new association, O'Neil has been appointed to be the first chief executive of the ERII. EES Staff Member **Charles Hilbers** will serve as associate director of the center. Although they will be moving to Ireland, O'Neil and Hilbers will continue to report to EES Director **Don Grace**.

A \$6 million cooperative venture between the IDA and Georgia Tech, ERII will use EES as its development model. Like EES, the center will be a non-profit research organization located at a major university. ERII's staff will be responsible for marketing and executing contract research. Its goals also will be the same: to aid in the promotion of scientific engineering and industrial research, to encourage more complete development and utilization of natural resources, and to advance science, technology and education. Similarly, ERII will concentrate its services on the application of electronics technology and the material sciences, with particular attention to alternative sources of energy.

EES will play a key role in the development of its European counterpart. ERII's first management and professional staff members will be trained at the Station. EES personnel may also work with Irish scientists on future research contracts.

Major funding for the ERII will be provided by the IDA and industrial



EES' Dan O'Neil will serve as the ERII's first executive director.

and commercial interests in Ireland. Its initial location will be in existing facilities at the National Institute for Higher Education in Limerick, Ireland. In its third year of operation, ERII is expected to move into a new 27,000 square foot laboratory and office facility to be built by the IDA at a cost of \$3 million. The balance of the investment dollars required to establish the center will come from private sector companies in Ireland such as Guinness Ltd., Bank of Ireland, Allied Irish Banks and The Rohan Group.

A program of tremendous significance for both Georgia Tech and the National Institute for Higher Education, ERII is expected to boost the economy of Ireland and to result in the establishment of new businesses by entrepreneurial researchers from the center. The program also can be expected to provide new research contracts to Georgia Tech.



EES Staff Takes New Liaison Program To Asia

EES Associate Directors **Rudy Yobs** and **Jim Wiltse** will visit Japan this month to develop interest and support for Tech's research programs and to further the Institute's new Corporate Liaison Program. **Warren Heeman**, vice president for institute relations and development, will join Yobs and Wiltse on the trip.

The Corporate Liaison Program is designed to intensify Tech's interactions with technology-based industries. To participate in the program, businesses and industries will pay an annual membership fee to the Georgia Tech Research Foundation, a tax exempt organization. The membership fee entitles the corporation to: access to Georgia Tech's many resources; the Institute's expertise in solving problems; working relationships with faculty and staff; information on the university's research; and new avenues for commercial development. Many other benefits are afforded to member firms, including access to the Price Gilbert Library and the Advanced Technology Development Center.

A campus liaison officer will be assigned to work with a company representative to assure that the firm's needs are filled by Tech faculty and staff members. A national advisory board of 40 prominent American businessmen are guiding the Corporate Liaison Program.

A preliminary luncheon meeting for the Corporate Liaison Program was

Security Office Moves

Georgia Tech's Research Security Office will move to Room 30 of the Electronics Research Building on April 1, 1981.

Al Becker, security officer for Tech and GTRI, says, "We are moving to ERB to be more immediately available to a larger segment of people working on security contracts."

After April 1, EES personnel should contact the Research Security Office in ERB. The telephone number for the office will not change.

Dr. Stelson Returns To Georgia Tech

Vice President for Research **Thomas Stelson** returned to Georgia Tech on January 22 following a one-year leave of absence as assistant secretary for conservation and solar energy with the U.S. Department of Energy. **Albert Sheppard** has resumed his position as associate vice president for research.

Among many activities commanding Stelson's attention since his return to campus was a press conference at Tech on February 18. Stelson and a panel of experts from Tech gathered on that evening to comment to the press on President Reagan's proposed budget revisions.

Participating in the one-hour question and answer session with Stelson were:

Archie Corriher, EES; **Daniel Papp**, director, School of Social Sciences; **Fred Allvine**, College of Management; **John Havick**, School of Social Sciences; **Nathaniel Pugh**, School of Health Systems; and **William Lee**, director of Financial Aid. **Ray Moore**, director, Research Public Relations Office, moderated the press conference.

The presentation was attended by 30 students and reporters from various media, including: WSB-TV; WAGA-TV; WSB Radio; WGST Radio and National Public Radio. Broadcasts of the press conference were carried on radio and TV after the event.



President Pettit (left) discusses the Corporate Liaison Program with **Japanese Consul-General Ryo Kawade (center)** and **Jack Welch, director, International Division, Georgia Department of Industry and Trade.**

held at Tech on February 18 for Japanese businessmen working in Atlanta. The event was attended by distinguished members of Tech's staff and a number of Japanese representatives, including Consul-General **Ryo Kawade**.

Yobs, Wiltse and Heeman will acquaint Japanese businessmen and industry leaders with the Corporate Liaison Program through two seminars in Tokyo and Osaka. They will also visit several industrial plants in Japan.

On the same trip, the delegation will visit Korea and the Phillipines to consult with existing research sponsors and to solicit new contracts. TAL Associate Director **Ken Maddox** will participate in the Korean and Phillipine meetings.

Staff Members

ECONOMIC DEVELOPMENT LAB

In January, **Judi Komaki** presented the most recent findings of her research on "Organizational Maintenance in the Marine Corps" at Marine Corps Headquarters in Washington, D.C., and at the 2nd Marine Division, Camp Lejeune, North Carolina.

Phil Williams and **Jim Burson** conducted a four-day continuing education course in February at Tech on "Industrial Toxicology."

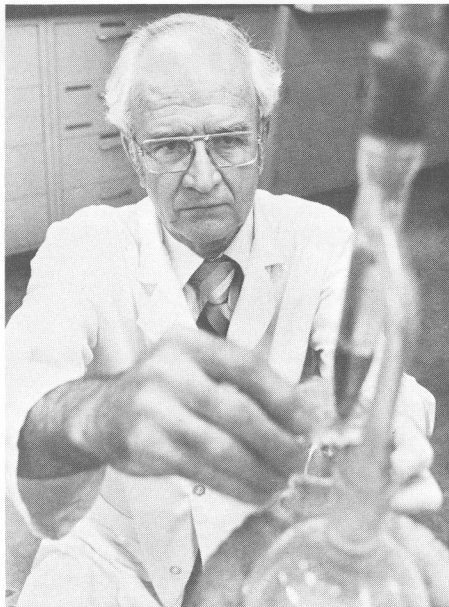
ELECTROMAGNETICS LAB

EML cooperated again this year with ECSL, EMSL, EES/OOD and the Office of the Associate Vice President for Research in providing research program demonstrations for more than 50 students from the School of Electrical Engineering. The demonstrations were beneficial for the students and the participating EES labs were thanked by the EE School.

Under the direction of **J. W. Dees**, **Jim Wiltse** and Vice President for Research **Al Sheppard**, EML also hosted three continuing education courses in February and March. The courses were on: "Millimeter Wave Systems and Technology"; "Laser Technology and Systems Application"; and "Infrared Technology and Applications."



Vice President for Research Thomas Stelson answers questions from the press at the Feb. 18 news conference on federal budget cuts.



EMSL's Jim Knight is serving as the project director for the entrained pyrolysis/gasification research program.

EES Wins Large DOE Award For Pyrolysis Work

The U.S. Department of Energy has awarded EES researchers \$1.5 million to develop an effective way to convert wood into gas.

Biomass specialists in EES' Energy & Materials Sciences Lab believe that a new technique, entrained pyrolysis/gasification, can transform wood into a gas useful as a fuel in industry.

Pyrolysis/gasification is a well-established method of converting wood into gas. In an entrained reactor, this conversion takes place as wood or char and oil are conveyed by a gaseous stream through the reactor.

"DOE wants to do research and development with an entrained system so that comparison with other conversion methods can be made," says Project Director **Jim Knight** of EMSL. "The advantage of entrained systems is that they potentially could convert biomass into gas on a large industrial scale."

"Our project is the only entrained biomass conversion system DOE is sponsoring," says Knight, who is collaborating closely on the three-year program with Professor **Charles Gordon** of Tech's School of Chemical Engineering.

EES engineers will design and construct an entrained pyrolyzer and gasifier on campus for testing. The entrained pyrolyzer will produce char and oil which will be mixed with steam and oxygen for conversion to syngas in the entrained gasifier.

Syngas is a mixture of carbon monoxide and hydrogen which offers valuable energy applications. It can be used directly as a fuel for industrial and commercial heating. Industries may also convert it into synthetic gasoline, methyl alcohol or natural gas. Methyl alcohol can be mixed with gasoline to make methyl gasohol. Syngas containing hydrogen also can be converted to ammonia for use in the production of fertilizers.

Present Papers, Win Recognitions

ELECTRONICS & COMPUTER SYSTEMS LAB

Cliff Burdette will be an invited participant in a panel session on "Millimeter Wave Analyzers" at the semi-annual workshop of the Automatic RF Techniques Group (ARFTG) in June in Los Angeles, California. The invitation was given to Burdette for his involvement on a contract for research and development of a millimeter wave synthesizer system.

Jim Toler has been included in IEEE's honor role as a new Fellow for his contributions to electromagnetic compatibility testing of cardiac pacemakers.

ENERGY & MATERIALS SCIENCE LAB

Tom Brown, Doug Neale and **Wally Shakun** attended the semi-annual User's Association meeting in Albuquerque, New Mexico in January. Brown chaired a session on "Solar Thermal Test Facility Testing of Storage Systems."

An article on **Rick Steenblik's** solar Spiral Concentrator was recently published in "Discover" magazine with a photograph of Rick and a model spiral concentrator.

RADAR & INSTRUMENTATION LAB

Pete Britt recently presented a paper on a "Narrow Field of View Terminal Horn Seeker" to the U.S. Army

Ballistic Missile Defense Advanced Technology Center in Huntsville, Alabama.

Jim Scheer and **Joe Newton** (EML) jointly presented a paper on "Active and Passive Millimeter Wave Measurements of Targets and Clutter" at the Southcon '81 electronics conference held in Atlanta in January.

SERVICE GROUPS

Martha Miller, assistant manager of the Supply Services Department, recently attended a course given by the Certified Manager Program of the State of Georgia. The course was on "Management in State Government, Level III."

TECHNOLOGY APPLICATIONS LAB

In January, **Bo Hendrix** spoke on EES' Industrial Energy Extension Service at "An Energy Future for Northeast Georgia," a seminar sponsored by the Northeast Georgia Area Planning and Development Commission in Athens, Georgia. **Bill Himes** spoke at the same conference on "Building and Marketing Energy Conserving Homes". Hendrix also has won third place for the best short article published by "Chemical Engineering" magazine in 1980. Originally published in the Plant Notebook Section of the magazine, the article was on "Move Motors to Cut Cooling Costs."

Personnel Activity Brisk In First Months of 1981

ECONOMIC DEVELOPMENT LAB

Jim Burson, certified safety professional, has joined EDL as assistant program director of the Occupational Safety and Health Group.

EDL bid a fond farewell to **Patty Office**, senior secretary, in February. Patty resigned her position last month to pursue other interests.

Congratulations are due to **Paul**



Ollie B. Francis, Jr.

In Memoriam

EES extends its sympathies to the family and friends of **Ollie B. Francis, Jr.** A research scientist II in SEL's Concepts Analysis Division, Mr. Francis died of a heart attack on January 18.

An expert in computer applications, electronic countermeasures and statistics, Mr. Francis had worked at Georgia Tech since 1957. He had been an EES staff member since 1971.

Mr. Francis will be greatly missed by all of his friends and co-workers at Georgia Tech.

Fuller Joins SN Staff

Kathy Fuller of the Personnel Services Department has graciously volunteered to serve as an associate editor of **Station News** for all EES Service Groups. Service Group employees with interesting news items should send them to Kathy in the Personnel Services Department, WGST Building.

Gayle Tucker also has been appointed to replace **Doris Schulze** as **Station News** associate editor for EML.

Middendorf, research scientist with the Savannah Area Office of EDL's Industrial Extension Division. Paul and Peggy Middendorf were blessed with a newborn son, Joshua George, in February.

ELECTROMAGNETICS LAB

Doris Schulze, lab secretary for EML, has been transferred to the Office of Contracts Administration where she is serving again as secretary to **J.W. Dees**, director of OCA. **Gayle Tucker** has been appointed as EML's new lab secretary.

The Physical Sciences Division of EML has had a "population explosion" in recent months. New babies born to staff members include: Jacob Wine, son of **Paul and Linda Wine**; Prescott Eisele, a December arrival for **Fred and Carol Eisele**; and Amanda Renee Harris, born on Christmas Day to the delight of parents **Mike and Linda Harris**.

ELECTRONICS & COMPUTER SYSTEMS LAB

The Biomedical Research Division welcomes two new employees: **Steven M. Sharpe**, research engineer II, from Duke University, and **Michael L. Studwell**, research engineer II, from Emory University. **Pauline Hampton**, administrative secretary, has transferred to the Office of Institute Relations and Development.

ENERGY & MATERIALS SCIENCES LAB

Paul Butler, senior research engineer, has resigned his position. On March 16th, Butler became vice president of the Cadre Corporation in Atlanta.

RESEARCH PR OFFICE

Lee Hughey, research engineer II, has joined the Research Public Relations Office as associate director. **Elinor Plowden**, research associate I, has resigned her position to pursue full-time graduate studies. **Martha Ann Stegar**, research scientist II, **Jerry Webb**, graphic artist, and **Charlotte Doughty**, technical typist, have also transferred into the Research Public Relations Office.

SERVICE GROUPS

Congratulations are due to **Vic Rockhill**, personnel assistant I, Personnel Services Department, and to **David Calhoun**, clerk III, Machine Shop. Vic

was married to Toni Friddell on March 21, and David wed Vickie Sorrells on February 27.

SYSTEMS ENGINEERING LAB

SEL regretfully said good-bye to three employees in February: **Charles Wakefield**, senior research scientist; **Esther Lee Davenport**, research engineer II; and **Sharon Shropshire**, senior secretary.

SYSTEMS & TECHNIQUES LAB

STL congratulates **Charles Hilbers, Jr.**, senior research engineer, on his recent promotion. Hilbers is now serving as associate director of the European Research Institute of Ireland.

Tony Gunther, Defense Electronics Division, welcomed a new addition to his family last month: a daughter named Jocelyn Ruth Gunther.

TECHNOLOGY APPLICATIONS LAB

Principal Research Engineer **Nelson Wall** has resigned his position as chief of TAL's International Division. An employee of the Station since the early 1960's, Wall played an important role in the development of EES's international programs. **Ken Maddox**, TAL associate director, is serving as acting director of the division until a new chief is appointed.

Rick Thomas, manager of the Manufacturing Technology Center, has also resigned. Thomas is now working with a robotics firm in Atlanta.

Station News

Vol. II No. 6 Feb.-March, 1981

Published monthly for employees of the Engineering Experiment Station, Georgia Institute of Technology, Atlanta, Georgia.

Editor

Jackie Erney 3405

Associate Editors

Dee Ramunno, OOD 3400

Anthony DeCurtis, EDL 3806

June Wilson, EDL 3836

Gayle Tucker, EML 3500

Gayle Hudson, ECSL 3542

Charlotte Sanders, EMSL 3460

Margaret Textor, EMSL 3530

Ginny Gross, EMSL 3589

Maggi Rampling, RAIL 424-9621

Janice Manders, SEL 3519

Cindy Chappell, STL 424-9647

Erich Welch, TAL 3412

Kathy Fuller, Service Groups 3445