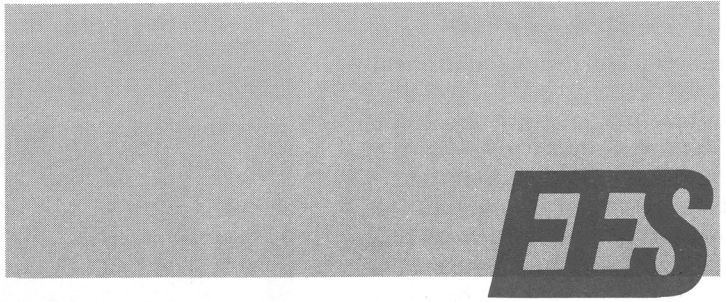


# STATION NEWS

ENGINEERING EXPERIMENT STATION • GEORGIA TECH



VOLUME 2 NUMBER 9

OCTOBER, 1973

## Life Insurance Changes

On July 1, the University System of Georgia assumed the entire cost of our group life insurance to a maximum coverage of \$15,000. Following are the highlights of the employee's life insurance plan. In later articles, we will explore dependent's coverage and health insurance. The Equitable Life Assurance Society publishes a handbook explaining the coverage in detail; copies will be distributed by the Staff Benefits Office the first part of October.

To be eligible for the free life insurance, an employee must normally work at least twenty hours a week. Those employed on July 1 were automatically enrolled; new employees become eligible on their employment date. The free insurance starts with \$4000 coverage for an annual salary of less than \$3000. The amount of coverage increases as the salary level rises until the maximum coverage of \$15,000 is attained at a salary of \$7000 and above.

When the employee's salary is in the \$8000-9000 range, he may obtain contributory supplemental insurance, starting with \$3000 coverage up to a maximum of \$40,000 at a \$22,500 and above annual salary. An employee may take out supplemental coverage without a medical examination up to 31 days after he becomes eligible. After then he may have to prove his insurability. In other words, if you make less than \$3000 per year, you may have \$4000 of free life insurance. At an \$8000

salary, you have \$15,000 free insurance and are eligible for \$3000 supplemental insurance. If your salary is \$22,500 and over, you may be insured for \$55,000: \$15,000 free insurance and \$40,000 supplemental coverage. The supplemental insurance costs \$.50 per \$1000 coverage.

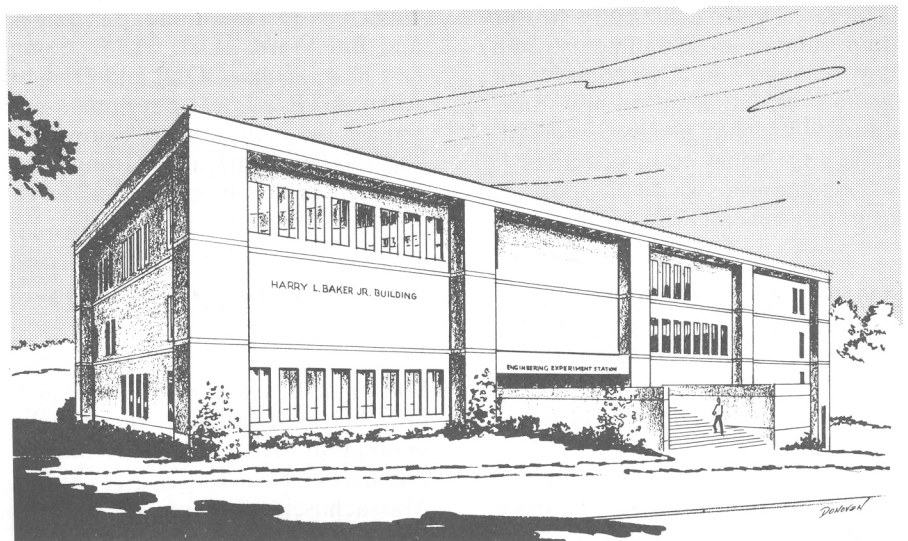
If your compensation should change, your insurance cannot be reduced. Appropriate changes in coverage are effective when the amount of compensation rises. Your group life insurance will continue for 31 days after termination of employment. Within that time period, you may convert to individual insurance with no medical examination needed.

Continued, next page.

## EES Building Dedicated

The new EES building was officially dedicated to the memory of Harry L. Baker, Jr., on Saturday, September 29. Tech President Dr. J. M. Pettit served as master of ceremonies. Appropriate remarks about Mr. Baker and his contributions to the EES were made by Director Dr. M. W. Long and Vice Chancellor for Academic Development Dr. J. E. Boyd. The Reverend Theodore Williams, Curate of St. Luke's Episcopal Church, gave the invocation and benediction.

Harry Baker became the first President of the Georgia Tech Research Institute in February, 1946, a position he held with distinction until his death on January 11, 1973. Continued, next page.



Harry L. Baker, Jr. Building

## Life Insurance Changes

The accidental death and dismemberment coverage pays the entire amount of insurance for loss of life, both hands or both feet, sight of both eyes or any combination of hand, foot or sight of one eye. One half of the insurance amount is paid for the loss of one hand, one foot or one eye. The accident must be caused "directly and exclusively by external, violent and purely accidental means and independently of all other causes." Loss must occur within 90 days after the accident.

The accidental death and dismemberment coverage does not apply to losses from or caused directly or indirectly, wholly or partly, by bodily or mental infirmity, bacterial infections except when caused by pyogenic organisms, disease or illness of any kind, self destruction, self-inflicted injury, war, felonious acts or serving as a crew member of an aircraft.

If while insured you become totally and permanently disabled before reaching age 60, the first \$20,000 of life insurance is paid in 60 equal monthly installments upon proof of disability. Amounts of insurance in excess of \$20,000 may be continued at no cost with continued proof of total and permanent disability.

When you reach age 67, the amount payable of your life insurance is cut in half, or the basic free amount, whichever is greater; and the accidental death and dismemberment coverage is terminated.

The insurance death benefits are payable to your beneficiary in one lump sum or in installments. You may change the beneficiary or method of payment at any time, although the change must be recorded on your policy to be effective.

Next month we will look at insurance coverage for dependents.

## INDUSTRIAL EXTENSION SERVICE MEETING HELD AT CALLAWAY GARDENS

The LaGrange Chamber of Commerce and the Troup County Industrial Authority hosted the September meeting of the EES field office directors at Callaway Gardens. Rep-

Harry L. Baker, Jr., Building Continued—



Friends and relatives of Harry Baker gathered for dedication ceremonies Saturday morning, September 29.

Between 1946 and 1963 he also served as Assistant Director of the EES. In February, 1966, he was appointed Director of the Office of Research Administration. By his understanding and pursuit of the purposes and objectives of the Research Institute, he contributed significantly to the manner in which the EES has served Georgia Tech, the state and the nation.

A native of Atlanta, Harry Baker earned his degree from Tech in 1934 and was elected to Phi Kappa Phi.

He also received a J.D. degree from Emory Law School in 1961. He was a member of Beta Theta Pi, Alpha Chi Sigma, the National Society and the Georgia Society of Professional Engineers, the American Society of Heating, Refrigeration and Air Conditioning Engineers, the American Institute of Chemical Engineers and the Committee on Governmental Relations of the National Association of College and Business Officers. He was a retired Navy reserve captain.

representatives of several major state-wide industrial development organizations were invited. Representing EES, in addition to personnel from the area offices in Albany, Augusta, Carrollton, Douglas, Macon, Rome and Savannah, were **Eric Berg, Bob Cassell, Ross Hammond, Ben James and Bill Ward, IDD; M. W. Long and R. L. Yobs, OOD; and Dwight Allen, GTRI.** Local developers extended the invitation to "show off" the industrial park at LaGrange and to brief the group on the local development program.

## MASON EARNS PhD

Research scientist **Robert M. Mason** of Physical Sciences earned his PhD designation at the August graduation. He earned his undergraduate and master's degrees at the Massachusetts Institute of Technology.

He is a member of the Institute of Management Sciences and the International Society for Technology Assessment.

Bob and his wife Betty have two children.

## STATION NEWS

Vol. 2 No. 9 October, 1973

Published monthly for employees of the Engineering Experiment Station, Georgia Institute of Technology, Atlanta, Georgia 30332.

J. A. Donovan, Editor	3405
Bonnee Wettlaufer, Ass't Ed.	3405
Betty Yarborough, Assoc. Ed.	3445
Betty Jaffe, Assoc. Ed.	3430
Ann Lewis, Assoc. Ed.	3516
M. A. Deadmore, Assoc. Ed.	3873
J. E. Garrett, Reproduction	3570

## New Faces in ASD

The Applied Sciences Department has added seven employees to its staff:

- Dr. John W. Amoss, Senior Research Engineer, formerly Assistant Professor at Auburn University
- Mr. Larry W. Brown, Assistant Research Scientist, formerly a science teacher at Deltona Junior High School, Deltona, Florida
- Dr. N. Walter Cox, Senior Research Engineer, formerly Senior Development Engineer at Sperry Rand Electronic Tube Division, Gainesville, Florida
- Dr. Edward Keng, Senior Research Engineer, formerly with TAG/EES
- Dr. Miroslav Marek, Senior Research Engineer, formerly a Postdoctoral Fellow at Georgia Tech
- Dr. Earl L. Meeks, Senior Research Scientist, formerly Instructor of Physics at St. Petersburg Jr. College
- Mr. Charles T. Rucker, Senior Research Scientist, formerly Senior Development Engineer at Sperry Rand Electronic Tube Division, Gainesville, Florida

Milton E. McLain, Jr., NBSD/ASD has resigned to accept a position as Staff Member with the Los Alamos Scientific Laboratory.

Steve Spooner has finally found his "niche"—he is now permanently located in Crystal Physics, PSD/ASD—Harry L. Baker Building!

Bill Ward and Hardy Taylor, IDD, were in Washington September 13 to discuss project development with the Farmers Home Administration.

## S&T Department

New members of the professional staff of the Systems and Techniques Department are **Dr. Stephen Cole**, Senior Research Scientist in the Radar Division and **Mr. Calvin Espy**, Assistant Research Engineer in the Communications Division. **Dr. Cole**, whose undergraduate and graduate degrees are from Harvard, was most recently associated with Electronic Data Systems in New York. **Mr. Espy**, a graduate of Georgia Tech, has just completed his Masters Degree work at Stanford University.

## R. A. Young in Europe

During the first half of September, **Dr. R. A. Young** attended two meetings and visited several laboratories in Europe. The principal reason for his trip was his participation, at the invitation and principal expense of the French CNRS, at the International Colloquium on Physical Chemistry and Crystallography of Apatites of Biological Interest, Paris, 10-15 September, where he gave the first thematic lecture ("Some Aspects of Crystal Structural Modeling of Biological Apatites"). He took the occasion to attend the Third International Conference on Small Angle Scattering in Grenoble 5-8 September, to visit laboratories in Grenoble and Paris, and to visit the Chester (England) office of the Technical Editor of the Journal of Applied Crystallography, of which Dr. Young is the Editor.

**New faces around the EES: Judith Boring** is a new member of Reports and Procedures; **Connie Martin** joined the Photo Lab to replace **Martha Miller** who transferred to Supply Services; **Mary Haack** is now in the Office of Research Administration from R&P. She replaces **Cheryl Hilderbrand**. **Janet Cleveland** also transferred from R&P to ORA.

**Eleanor Hancock** of Technical Services has left to await the arrival of her baby.

## On Committees

Several EES employees are currently serving on various committees. **Howard Dean** is a member of the Georgia Metrication Committee, set up by the Governor's Science Advisory Council to provide guidance to state agencies and industries in the anticipated conversion to the metric system of measurements.

**Chart Bonham** is on the Georgia Energy Policy Committee to advise the Governor on the energy crisis and its meaning to Georgia.

**James Knight, Jr.**, **Mack Bowen** and **John Tatom** met with the Crisp County Power Commission to develop a proposal for the use of wood waste to supplement regular fuel in the electrical power plant.

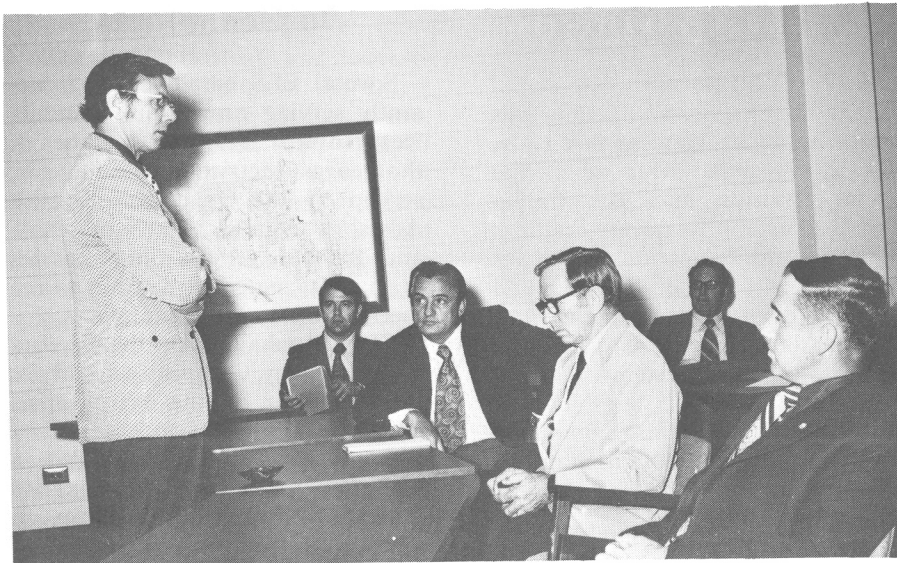
## IDD Participates In Professional Developers' Conferences

Atlanta has the honor this year of being the site for the 28th Annual Conference of the Southern Industrial Development Council, and several IDD staff members are playing important roles in conference planning. **Ross Hammond**, the Georgia representative on the SIDC Board of Directors, is chairman of the Program Committee; **Bob Cassell** is chairman of the Finance Committee and **Ila Benson** is on the Ladies' Program Committee. The conference will be held at Stouffer's Atlanta Inn October 21-23.

The Georgia Industrial Developers Association's Annual Conference also will be held at Stouffer's, on October 19-20, with **Bob Cassell** on the Planning Committee. **Ben James** is secretary-treasurer of GIDA.

## EES PEOPLE ON THE MOVE

**R. D. Kimbrough, Jr.**, NBSD, attended the meeting of the American Chemical Society in Chicago Aug. 29-30... **J. C. Toler**, S&T, presented a paper at the 1973 symposium on Microwave Power sponsored by the International Microwave Power Institute in Loughborough, England, Sept. 7-15.



EES Director M. W. Long discusses EES capabilities with the representatives of the Poultry Federation and the Poultry Affairs subcommittee.

## Poultry VIP's Visit

Representatives of the Georgia Poultry Federation and members of the Poultry Affairs subcommittee of Ga. State Legislature visited EES in connection with work being done with the Department of Agriculture to improve automation in poultry processing. The work is being done under the supervision of Lyn Stapleton, Project Director. The visitors met in the conference room September 12, then visited various EES facilities.

## IDD CONDUCTS WOOD UTILIZATION STUDY

Tze I. Chiang, IDD, went to New York September 20-21 to confer with personnel of the Scholarship, Education and Defense Fund for Racial Equality (SEDFRE) concerning a Greene County, Alabama, wood utilization study. Under IDD's guidance, SEDFRE personnel will interview wood processing concerns in a six-county area in Alabama as the first step of the wood utilization program. The first study is funded by the Economic Development Administration. Subsequent studies would depend upon SEDFRE's fund-raising situation.

J. C. Toler was one of six persons elected nationally to serve on the Administrative Committee of the IEEE Electromagnetic Compatibility Group. The term is for three years and begins on January 1, 1974. The Administrative Committee is responsible for policy and planning direction for the Group's international activities.

## Recent IDD Reports

IDD has just completed, under contract with the Coastal Area Planning and Development Commission, a study of the economic impact on four Georgia coastal counties (Brantley, Camden, Charlton and Glynn) and three Florida counties of the offshore power systems manufacturing plant to be built by Westinghouse-Tenneco at Jacksonville, Florida. The \$210-million facility will construct floating nuclear power plants for delivery off the Atlantic and Gulf coasts, employing approximately 6,000 persons. The report discusses the plant's expected impact in terms of jobs, intercounty commuting, the income multiplier effect, satellite industries, and utilities and industrial sites for support industries. Report authors were Harvey Diamond and Sherman Dudley.

Harvey Diamond also recently completed another study, **Industrial Possibilities for Rural Georgia**, which presents brief descriptions of 21 industries which are particularly suited to rural areas and 27 rural Georgia counties which especially need the economic stimulus of new industry and have industrial park facilities available. The report is meant to serve as the basis for follow-up, in-depth analysis.

A third recent IDD report, **Georgia Employment and Population Projections with Special References to Water-Using Industries**, was prepared for the Water Quality Control Section of the Georgia Department of Natural Resources. The major portion of the study consists of tables which show for each Georgia county (1) actual and projected employment, 1970-2000, for selected manufacturing and non-manufacturing industries and (2) actual and projected population, 1940-2000. Preliminary chapters discuss the methodology and significance of these projections, analyze the manufacturing situation with emphasis on the four broad industry groups which account for almost 97% of the water discharged by Georgia manufacturing industries, and present data on waste water discharge by manufacturers, mineral industries and power generation facilities. Bob Cassell was principal investigator, assisted by Tze Chiang, David Clifton, Bob Collier, Amy Collins and George Dodson.

## EMERGENCY EVACUATION PLAN

If a fire is discovered, activate the nearest fire alarm pull station.

Call Tech Police (extension 2500) and the Manager of Services (extension 3407). Report the fire, building name, and location of the fire in the building.

If the fire is small, attempt to extinguish or control it using the proper type of fire extinguisher until the Fire Department arrives.

Do not place yourself in danger. If there is any doubt, EVACUATE the building.

When the fire alarm sounds, ALL personnel will evacuate the building using designated evacuation routes and assemble in the building assembly area.