

The GTRI Connector

Inside: Olympic Summer Survival

At-a-Glance list of names, numbers, information you'll need. (See page 4.)

Vol. 12 • No. 8

Published Monthly for the Georgia Tech Research Institute Family

June/July 1996

Computer Access Lines Added in Time for Olympics

By Rick Robinson, RCT

GTRI has nearly tripled the number of dial-up lines that offer off-campus access to the Georgia Tech computer network. Employees can now access a pool of 22 modems that have PPP-line capability, up from eight modems.

Tom Brown, manager of GTRI's Administrative Information Systems Team (AIST), said adding modems would have been necessary in any event, because the eight-modem setup had experienced full usage recently. The decision to increase the modem pool so substantially was based on Office of Information Technology (OIT) and AIST studies that projected a large jump in off-campus access needs during the Olympics.

About 300 employees currently have accounts that allow access to GTRI's PPP lines. Two telephone numbers feed into the modem pool: a local calling-area number (404-894-6333), and an 800 number (800-224-2584) that simplifies system access for traveling employees. GTRI's modem pool is physically located in the Rich Building and is managed by OIT.

An AIST poll of GTRI lab directors and unit managers indicated that from 75 to 125 modem lines would be needed at peak periods during the Olympics, as more employees work off-campus. However, time-sharing arrangements — under which various groups would access the system at dif-



New dorms are part of the Olympics/Paralympics legacy for Georgia Tech. Turn to page 5 for more photos. (Photo by Lea McLees)

ferent times — are expected to allow the 22-modem pool to carry the peak load with minimal saturation.

Those calling in via the PPP lines will be able to perform any network operation possible from their campus computers — including World Wide Web access, e-mail operations, FTP file operations and telnet sessions.

"That's the intent of it," Brown said. "You have all of the functionality of somebody who's on our campus network."

The only difference will be the data rate, he noted. The campus ethernet network can transfer more than 3 megabits of data per second under optimal conditions. By contrast, a 28.8 modem — the fastest speed practical on a conven-

Continued on page 2

Operations under PMC and APLC Continue in FY 97

GTRI will continue using Circular A-21/Project Management Cost (PMC) and Allocated Project Level Costs (APLC) during FY 97, while the Office of Naval Research processes GTRI's request to change to a different cost accounting structure.

Earlier this year, Georgia Tech proposed to the Office of Naval Research a change to Circular A122/(Attachment C) Federal Acquisition Regulations (FARs)/Commercial Cost Principles. Switching to the commercial FARs could make our cost structure more flexible and familiar to our customers, en-

Continued on page 2

Observed & Noted

This month's Olympics questions address transportation issues. *Get the answers on page 3.*

■
Jim Coleman holds an AFCEA office. *Find out what he's doing on page 3.*

■
Want to send the

1996 GTRI Annual Report to your contacts? *Find out how on page 3.*

■
Want to know how cost sharing works? *Turn to page 6 for answers.*

■
CEISMC is preparing future scientists and engineers.

Read the first installment of a two-part series on page 6.

■
The GTRI Journal will be reappearing with a new name in electronic form. *Learn what's planned on page 7.*

■
Meet Vince Calhoun, Jim

Cannady and Derya Ozyrt. *These new employees are profiled on page 7.*

■
Learn the latest professional, personnel and personal news about your colleagues. *Flip to the back page to catch up.*

Connector Summer Schedule

Look for your next Connector in August, after the Olympics Secure Period ends. If you have any post-Olympic questions about how things will return to normal after the Games — send them to lea.mclees@gtri.gatech.edu, or call 404-894-4259. We'll get the answers for you!

News & Notes

Meet the Personnel Support Team

This month we complete our visit with the Personnel Support Team (PST). PST is responsible for all aspects of employment in GTRI laboratories and units including hiring, recruitment, payroll, timekeeping and training.

One of the tools supporting PST in its mission is the Human Resources Information Systems (HRIS) database. This database contains a current and historical record of GTRI employees, including some data that is not available anywhere else on campus. Using the database, the PST staff can locate data and create reports in record time. This month we will get to know the employees in the HRIS group who maintain the database, generate reports and enter data into the system.

Donald Carder, a data processing specialist, has worked with PST since July. He helped design and develop the new GTRI Employee Database and continues to provide support to HRIS. Before coming to GTRI, Donald received an associate's degree from Dekalb College and spent a year at University College Cork in Cork, Ireland, where he earned a certificate in Irish studies. Currently, he is working on bachelor's degrees in history and English.

Donald has held a variety of jobs ranging from working in a warehouse to office supervisor, from bouncer to manager of a movie theater. "I've led an interesting life," he says. Donald grew up in Stone Mountain, where he says he will continue to live for a little while longer. When he is not working or studying, he enjoys films, Irish literature, theatre and long walks.

Miriam Patton is a personnel assistant I for the HRIS group of PST. She joined GTRI last November after moving to Atlanta from Vicksburg, Miss. Miriam is responsible for providing support in the HRIS area. Her past work experience includes working in the accounting department of Harrah's Casino in Vicksburg.

A graduate of Alcorn State University in Lorman, Miss. with a bachelor's degree in business, Miriam is currently on the Dean's List at Dekalb Tech, where she is studying information technology. Miriam grew up in Vicksburg, but after some encouragement from her two sisters who live in Southwest Atlanta, she decided to see what Atlanta had to offer. She lives in Clarkston with her husband of 11 years, Tony, and their two daughters, Alexis, 11, and Veronica, 3. Although work and school take up a great deal of her time, Miriam relaxes by reading or playing with her computer. "To me, fun is learning," she says.

Congratulations to Another Grad!

Jeffrey Grover, chief scientist in ITL, was presented his executive masters, of business administration at Emory University during commencement on May 13. His thesis addressed "The Prospects, Challenges, and Reality of Internet Commerce." In GTRI, Jeffrey works on computer resource development methodology for research supporting advanced major weapon system acquisition programs.



Modem

From page 1

tional telephone line — operates at 57.6 kilobits per second compressed, or about 50 times slower.

"There are some things you would do here at work that you would probably not consider doing at home — such as bringing back a big image on a Web browser," Brown advised.

In addition to the 22 PPP-capable modems, four conventional lines that support anonymous telnet sessions lines remain in place. These are the lines that GTRI workers without PPP accounts use to dial up for e-mail remotely.

Brown would like to see all modem lines become PPP lines before long. "It's amazing how much better you can manage the system when each individual account logs on with their own identity and their password," he said.

Among other things, he notes, PPP accounts make it easy to track down problems — such as costly overuse of the 800-number line that has occurred lately in a few accounts.

In the future, most modem use probably will be outsourced by OIT, Brown said. A recent Board of Regents agreement with MCI to use off-campus modem pools is expected to yield lower long-distance rates (and in some instances none at all) — and make busy signals an endangered species.

FAR

From page 1

hance collaboration with resident instruction colleagues, and fit GTRI's needs better than the current structure.

If the change request is approved, GTRI would begin operating under commercial FARs in FY 98. Word on the government's decision is expected in late summer or early fall. The longer implementation will allow for some testing and piloting of new systems and processes which will be required under the new cost principles.

SELECTED APRIL 1996 AWARDS

Title	PI/Laboratory	Sponsor	Funded Amount
Vibrating Screen Testing & Analysis	Wasikowski, M. (AERO)	GNB Technologies	\$ 31,744
MH-53J Integrated Electronic Warfare System ISS MOD	Strike, T. (ELSYS)	Air Force	50,000
EW Techniques Analysis	Rogers, W. (ELSYS)	Air Force	648,652
ECIT Software Engineering Support - Task Order 0002	Morrison, R. (ELSYS)	CTA Inc.	28,400
Technology Science & Policy Transfer	Davis, N. (EOEML)	Army	50,000
Tactical Threat Engagement & Countermeasures Simulation System	Mullikin, A. (EOEML)	Army	200,000
Optic Talon	Wilson, B. (ITL)	Army	27,626
Falcon View Enhancements	Pyles, J. (ITL)	Army	875,000
EC Test & Evaluation Infrastructure Improvement & Modernization	Eagar, W. (ARG)	Air Force	599,648
Waveform Simulator Operations Support	Kerr, R. (SDL)	Lincoln Laboratory	300,000
Support for AN/FPS-85 Coherent Receiver Modification	Scheer, J. (SEAL)	PRC Corp.	38,028
Air Target Algorithm	Cohen, M. (SEAL)	Tau Corp.	60,000
Conformal Aperture Velocity Sonar (CAVES) Concept Evaluation and Testing (U)	Caille, G. (SEAL)	Navy	1,031,000
Radio Frequency Signature Simulation Support	Sidhu, J. (STL)	Army	20,000

Countdown to 1996

Living between Marietta and Roswell, I can use either MARTA or CCT. Both have dropoffs at the Arts Center MARTA Station, where I can take an "employee shuttle." How does the employee shuttle differ from the other shuttles, external, internal and courtesy, and what is its route and schedule?

The shuttle is part of the overall employee shuttle system and will be operated the same way. There are three types of shuttles employees might ride during the Games:

ACOG Satellite Lot Shuttles - These shuttles will move people from designated ACOG-obtained satellite lots to MARTA stations.

External Employee Shuttles - These shuttles will bring Georgia Tech employees to the Tech campus from MARTA stations (for those choosing the MARTA or CCT options) or from the Georgia Tech satellite lots (for those choosing the satellite parking option). Employees will be dropped off at their Entry Control Point (ECP) by this shuttle and picked up there at the end of the day.

Internal Shuttles - Internal shuttles will be available to employees once they have entered their security zone through their ECP. The internal shuttles will transport employees from the ECP to their buildings and may also be used by employees throughout the workday to get to dining sites or other buildings within their security zone.

The routes and schedules for these shuttles can be found in the Olympic Parking and Transportation Plan which is available from the Olympic/Paralympic Planning Office.

If I am taking MARTA, how do I distinguish between MARTA parking lots and ACOG parking lots?

MARTA parking lots are those lots that are owned and operated by MARTA. These lots include MARTA Park-and-Ride lots and lots located at MARTA transit stations. If the lot is a MARTA lot now, it will be considered a MARTA lot during the games. ACOG parking lots are being opened specifically for the Olympics and will only be operational from July 18 to August 4, 1996.

I understand that ACOG lots will charge \$10 per day, reimbursable from ACOG through GTRI. Will there be a charge at MARTA lots and, if so, will that money be reimbursed?

The fee structure for MARTA lots will remain the same. MARTA parking lots that do not currently charge for parking will not charge during the Olympics. To find out about the fee structure at the lot you would like to use, you should call MARTA directly.

Will CCT provide park and ride lots either on its own or through ACOG? If so, will there be a charge for parking and will we be reimbursed for that expense?

The CCT pass which some employees have requested will be good for all CCT services during the period between June 15 and August 15, 1996. Those with specific questions about available services and/or

routes should call CCT at 770-427-4444.

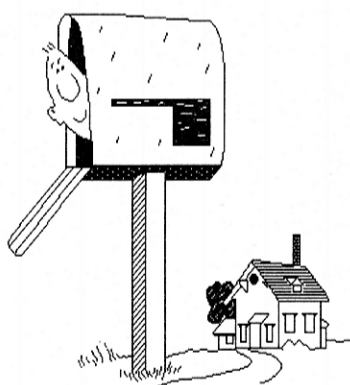
Will I be able to have access to 10th Street to park in either the Southern Regional Education Board (SREB) or Institute of Paper Science and Technology (IPST) parking areas?

Employees will be assigned to parking areas based on the building they work in. If you are assigned to one of the lots accessible only from 10th Street, you will be given a special permit to allow you entry to 10th Street.



Parking/Transportation Plan Available

The *Summer 1996 Parking and Transportation Plan*, published in May, provides detailed information about parking and getting around campus during the Olympics. If you have not received a copy of this plan, please contact Tony Chan at 894-0429 or tony.chan@facilities.gatech.edu.



Here's How

Send the 1996 GTRI Annual Report to Your Contacts

Do you want sponsors, potential sponsors, colleagues or other contacts to receive the *1996 GTRI Annual Report*? If so, submit names, titles, organizations and addresses of those you'd like to add to John Toon by June 24. You may send the addresses via e-mail to john.toon@gtri.gatech.edu; via fax to 404-894-6983; via campus mail to RCT/CRB, 0828; or drop them by Rm. 223 CRB. If you have questions, call 894-6986.

Coleman Named AFCEA Officer

By Lisa Mullikin, RCT

A GTRI researcher is taking an active role in providing a forum for the exchange of information between government, industry and academia.

Senior research scientist Jim Coleman was recently named Regional Vice President for the Armed Forces Communications and Electronics Association (AFCEA) for the Georgia region.

Coleman was appointed to the position of regional vice president after serving as president of the Atlanta Chapter of the AFCEA and a member of the board of directors. His 15 years at Georgia Tech combined with ten years working in these areas from the military perspective give him a sound background for this service.

"The technologies of interest to the AFCEA community are those same things we work on here at Georgia Tech," said Coleman.

AFCEA Intl. is a professional educational association with a four-fold mission:

- to promote industry-government cooperation in developing effective Command, Control, Communications, Computers and Intelligence (C4I) capabilities, including the development, manufacture and operation of equipment and systems, and provision of services;

- to foster strong national C4I organizations and educational programs;
- to contribute to the professional development of those serving in C4I fields; and

- through these activities, to further the security and preparedness of the United States and its allies.

To accomplish this mission, Coleman explains, the group maintains a forum through meetings and symposia where the government and the military can explain their technological needs and industry can outline its capabilities and further educate the group on scientific and technological advances.

Coleman's activity includes translating between the vision at the international level of the association and what is happening at the four local chapters in Georgia.

He also will help organize and attend the symposia and conferences AFCEA sponsors each year. International and local trade shows and conferences offer an opportunity for major companies doing business with the government to meet and exchange ideas and information.

AFCEA also offers professional short courses throughout the year to cover a variety of fields in information and telecommunication.

This year marks the 50th

Continued on page 7

News & Notes

Focus on Research

At-A-Glance Summary: Getting Ready for the Olympic Summer

Following is a quick review of basic Olympics-related information, schedules and phone numbers available as of our deadline.

Two Must-Have Publications

• *Getting Through Summer 1996: The Official Guide to the Olympic Summer for Georgia Tech Faculty and Staff* — if you didn't get a copy in early 1996 — or if you have a new employee who needs a copy — contact Ashley Gigandet at 404-894-3648 or ashley.gigandet@facilities.gatech.edu.

The *Summer 1996 Parking and Transportation Plan* — if you didn't get a copy in May, you may contact Tony Chan at 404-894-0429 or tony.chan@facilities.gatech.edu.

Riding Cobb County Transit (CCT)?

Call 770-427-4444 for information about schedules and stops.

Taking MARTA?

You can get bus and train schedules for your area mailed to you — as well as a MARTA Olympics transportation folder full of helpful information — by calling 404-848-4711. Check out MARTA's Web site for train system maps, how-to-ride information and more: <http://www.itsmarta.com/>.

Travel Hours to Avoid

In Midtown and Downtown, avoid traveling 7:30-9:30 a.m. and 4:30-6:30 p.m. Those will be peak travel times for Olympics spectators.

Medical Emergency During the Secure Period?

Call Georgia Tech Police at 404-894-2500 for on-campus emergencies. Call 911 for emergencies at off-campus sites.

Got a Security-Related Question?

Call Kurt Aikman in Research Security at 404-894-0223.

Day Passes Needed?

Call Research Security at 404-894-4822 between 7 a.m. and 5 p.m. 48 hours in advance of the visit. Day passes issued only to individuals with bonafide business reasons for visiting campus.

Questions About Chemical Storage and Hazardous Waste Disposal?

Contact Les Petherick, 404-894-4636.

Hungry?

The Institute of Paper Science and Technology in the Research Controlled Area will serve food 8 a.m.-6 p.m. Monday-Friday, June 17-Aug. 9.

Employees working in the Boxing Venue Zone (O'Keefe Bldg.) can buy meals in ACOG's staff dining areas July 14-August 4. Coupons for these meals will be available for about \$6 each.

Employees in the Village Secure Zone can eat at Junior's Grill from 6 a.m.-6:30 p.m. Monday-Friday, June 15-August 9. Junior's also will be open on Saturdays and Sundays from 10 a.m. to 3 p.m. June 15-July 1, at which point the benefit of opening on weekends will be re-assessed.

All vending machines in buildings designated for Georgia Tech's exclusive use during the Games will remain operational, and you can always bring your lunch. You can go off-campus to eat, but will have to go through an Entry Control Point when returning from lunch, just as you did when you arrived for work.

Dates to Remember

June 9-14: Campus transitions to ACOG Use
June 15-Aug. 14: Olympic Games Lease
July 1-Aug. 10: Secured Period
Aug. 9-Aug. 27: Paralympic Games Lease
Aug. 12-Oct. 4: Summer Session
Oct. 9-Dec. 20 Fall Quarter

Need Campus News About the Olympics?

Visit news://news.gatech.edu/git.olympics.official.

Olympics Questions?

Send e-mail to olympics@facilities.gatech.edu.

Georgia Tech Bookstore

Closed June 8-August 11. Most employees will work from a remote warehouse/office on 14th Street where books and merchandise will be received and processed for the summer and fall quarters. Main Office: 404-894-2515

Accounting Office

Located at Bill Moore Student Success Center. Phone: 404-894-2511, Fax: 404-894-2530

The Computer Store

Located at College of Computing, Classrooms #101 and 102, Research Controlled Area. Open 8 a.m.-5 p.m. Monday-Friday, June 8-Aug. 11. Phone: 404-894-2377, Fax: 404-894-1858.

American Express Office

Located at Bill Moore Student Success Center. Operating 8 a.m.-5 p.m. Monday-Friday, June 8-Aug. 11. Phone: 404-894-3853.

Office of Contract Administration

Open daily.
For proposal support, call Program Initiation Division, 404-894-4817.
For research report support, call the Contracting Support Division at 404-894-4764 or 404-894-6944.

Office of Human Resources

Open daily. Because OHR will be located in the Boxing Venue Zone/Paralympic Standing Volleyball Venue Site, some

functions to be relocated to Grady High School:

- Faculty and Staff Assistance Program
- Human Resources Development
- Employee Relations
- Employee Benefits
- Classified Employment

All other OHR functions can be handled by telephone, fax or mail.

Student Athletic Center

Closed June 8-October 2.

Employees with the special Sportslife sticker on their I.D. cards will be admitted to any of the Atlanta fitness chain's six locations while SAC is closed.

Georgia Tech Post Office

Mail will be picked up and delivered as usual. Satellite operation at 811 Marietta Street will provide will-call service for student mail pick-up, as well as a window for departments to drop off outgoing mail if necessary. U.S. Postal Service Postal Store will be across the street from that location for stamp purchases and other U.S. Mail services.

Georgia Tech Library

Open 8 a.m.-5 p.m. Monday-Friday, July 1-Aug. 10 for people with a Georgia Tech ID. Located in Village Secure Zone, which can be accessed by those accredited for that area, or by those with a Village Day Pass and an accredited escort. Most research needs can be handled using LENDS (try to request delivery of books before July 1), fax and e-mail. GTEL and Galileo (<http://www.library.gatech.edu>) available 24 hours a day. Information consultants and reference staff available via telephone or e-mail 8 a.m.-5 p.m. Monday-Friday. General Information and Reference Desk: 404-894-4529.

Office of Information Technology (OIT)

Open daily. Will continue to provide technology services/support to GT community, with the exception of courses and seminars, which will be suspended during the Olympics period. For the latest updates in service and support for the secure period, see OIT's Planning and Programs WWW page at <http://www.gatech.edu/oit/pp>.

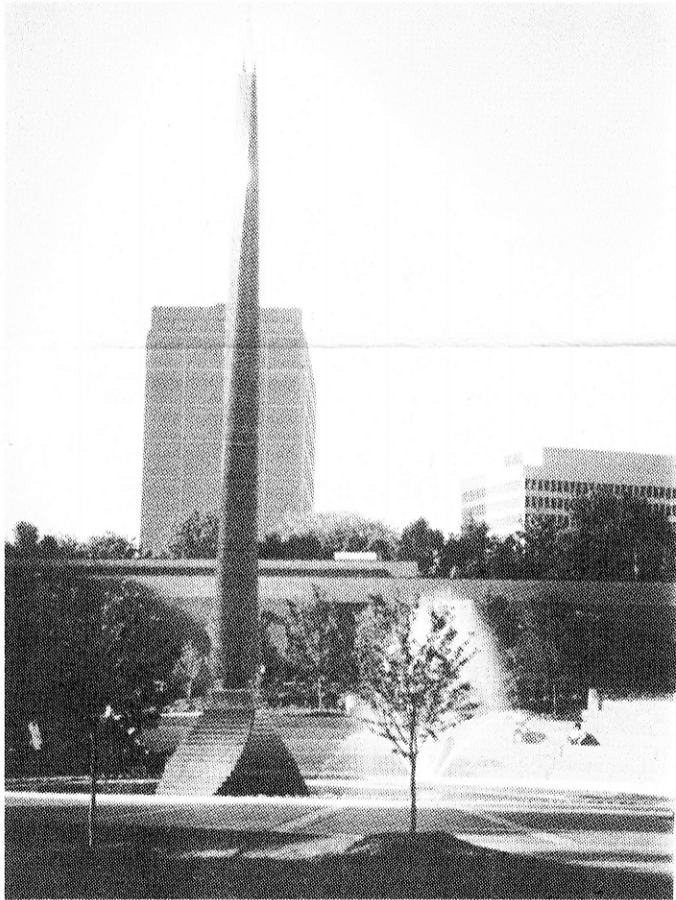
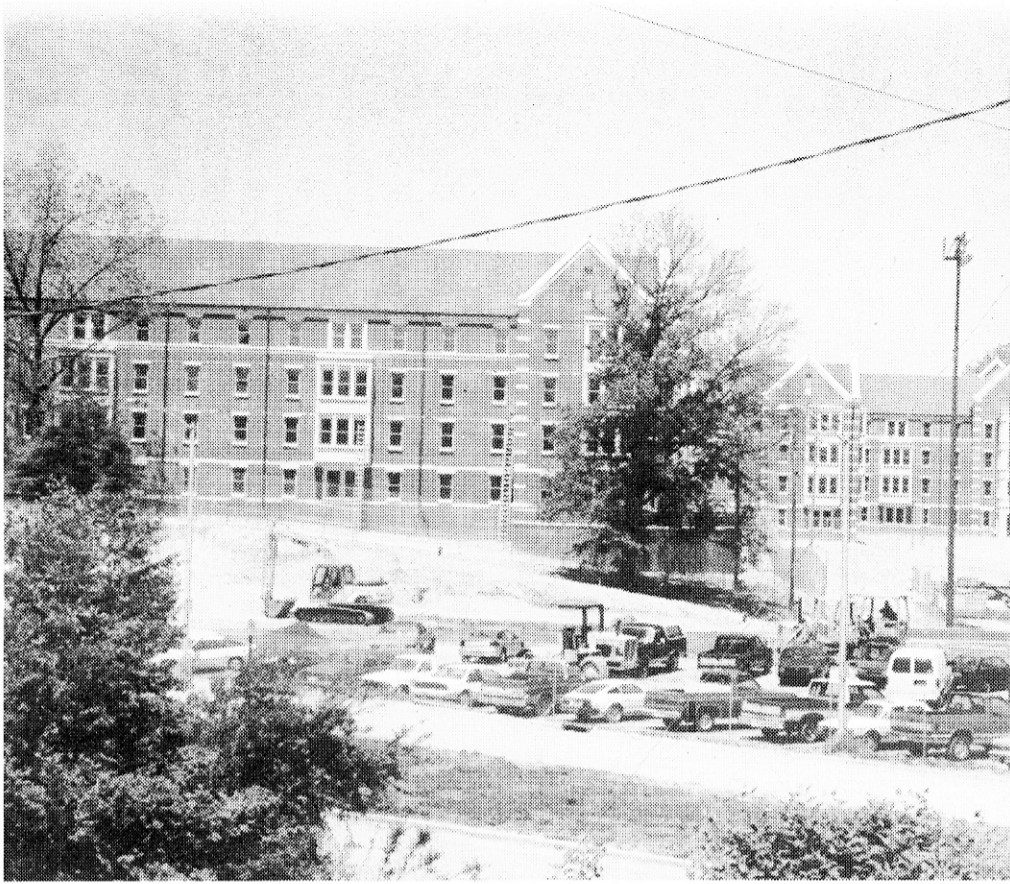
OIT Field Service Facility

Located at College of Computing, Chemistry Annex, Rm. 031, Research Controlled Area. Phone: 404-894-7170, Fax: 404-894-7166

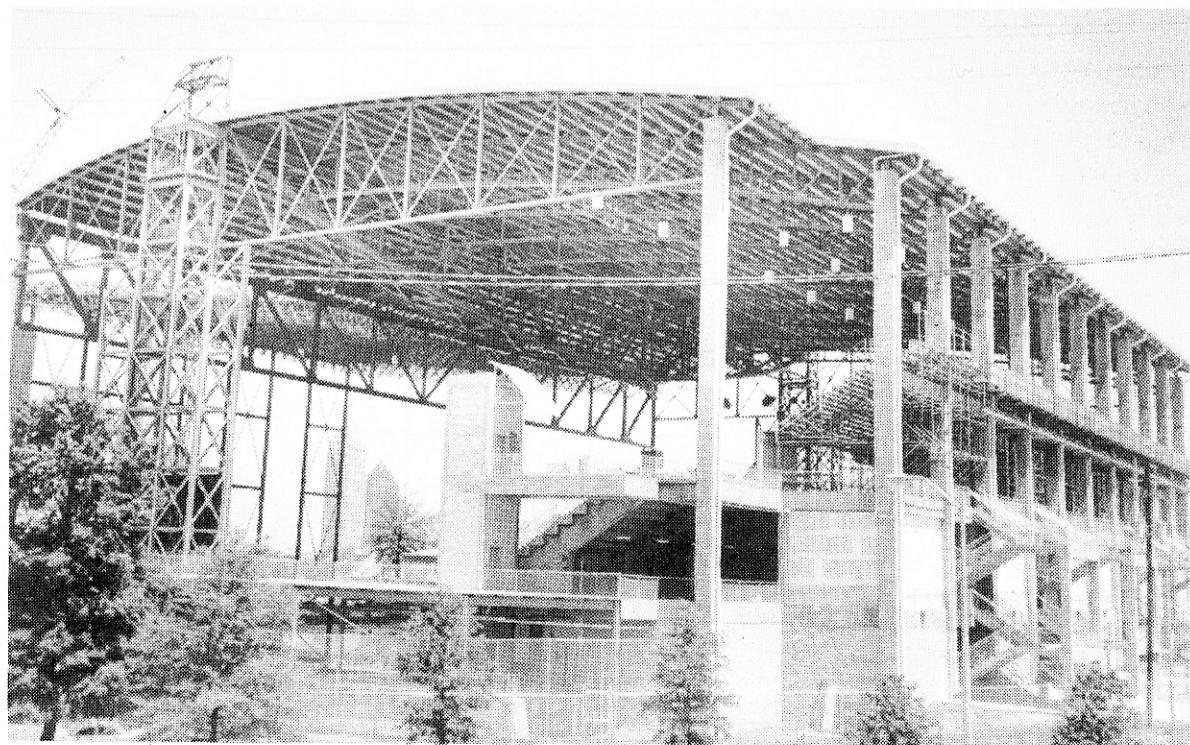
Sources: *Getting Through Summer 1996, The Whistle, The Technique, Research News, MARTA.*



**Focus
on
Research**



New dorms, the campanile, the fountain and the Aquatics Center have been added to the campus in preparation for the Games. (Photos by Lea McLees)



**News
&
Notes**

**A Cost Sharing
Q & A**

Q: What is cost sharing and when and how can it be used?

A: Cost sharing is a bit like antibiotics — to be used sparingly and only in appropriate situations. Under cost sharing, GTRI shares a portion (usually relatively small) of a project's price, shouldering the burden alongside the sponsor. In most cases, cost sharing constitutes a real-money drain on the Institute's discretionary funds or from a laboratory's budget. Only infrequently does it take on the form of "in-kind" arrangements such as sponsor use of a GTRI facility or faculty time.

"When you accept cost-sharing money, you're accepting a real expenditure of hard-earned money," observes John Nemeth, associate director of EOEML and also responsible for GTRI's State Programs activities. "The money GTRI contributes is money we won't be able to spend on lab equipment, computers, internal research, contract development or professional development."

Q: Does GTRI have an official policy on cost sharing?

A: Yes. Cost-sharing guidelines are spelled out in GTRI's Policies and Procedures manual under procedure number 2.12. The policy says specifically that cost sharing — and similar resources such as Growth Opportunity (GO) funds — can be used:

- 1) to improve GTRI's competitiveness on certain proposals
- 2) in circumstances where a sponsoring organization requires cost-sharing.

It's important to note that before committing to any cost-sharing arrangements with a potential sponsor, project directors should coordinate closely with their laboratory director in advance.

If funds from the GTRI Director's Office are to be used, then the lab must gain the approval of the Director of Research Operations before submitting the proposal.

Q: What kinds of projects qualify for cost sharing?

A: Only projects that promise special benefit to the organization are eligible, says Barbara Walsh, GTRI's manager of Fiscal Services. She explains that GTRI normally participates in cost-sharing projects "when it's felt it will lead to future fully funded work, or it enhances some aspect of our funded work. Essentially you're volunteering to sell at a substantial discount — and you do that for a purpose."

At times, a grant program's societal benefits justify a cost-sharing approach. Such has been the case with an OSHA-sponsored GTRI program that advances health and safety in Georgia. This program, started in 1978, and others such as EPA asbestos abatement projects under EOEML, get about 5 or 10 percent of their support from GTRI.

John Nemeth points to GTRI's research and technology transfer work on hazardous substances as an example of effective cost sharing. Such work, he says, has brought in additional contracts — such as the \$1 million that Georgia Tech has received in additional federal contracts for research in the bioremediation of TNT-contaminated soils and several other areas.

Cost sharing was the cornerstone of the Technology Reinvestment Project (TRP), in which Georgia Tech was very successful. This program required Tech to cost share 50 percent and caused us to strengthen our bonds with the Georgia Research Alliance and numerous private industries.

Q: What sponsoring agencies require cost sharing?

A: Numerous federal agencies, as well as some private organizations, require cost sharing when they make grants. EPA, OSHA, NSF, USGS and others fall into this category. The Hazardous Substance Research Center, for instance, requires a 20 percent cost-share, a condition written into the enabling Superfund legislation by Congress.

"Cost sharing is a way for federal agencies to see that state governments or their agencies are in real partnership," observes Nemeth.

Q: What budgetary concerns are associated with cost sharing?

A: A major concern in cost-sharing arrangements is the matter of hidden overhead. Barbara Walsh points out that project directors who propose a cost sharing arrangement are only required to identify a funding source for the direct-cost portion of the budget. Meanwhile, GTRI itself must pay for any related indirect costs that can't be recovered from the sponsor.

The proposed FAR cost-accounting system—which GTRI expects to adopt in FY 98—might help us get a clearer picture of our total costs. Under the proposed system, both direct and indirect costs are tracked by laboratory.

Under the new system, however, cost-sharing proposals will continue to undergo considerable scrutiny.

"GTRI is an organization that must run lean and mean," Nemeth says. "Every time we do cost-sharing, we're saying, 'This work is definitely worth risking our resources as an investment in the future.'"

If you have a question you'd like to see answered in The Connector, call Lea McLees at 894-4259.

GTRI Retirees

Thank you to these retirees for their years of service!

Name	Lab/Group
Billy Atcheson	Accounting
David Blount	SEAL
Lloyd Lilly	ELSYS
Dusty Rhodes	ELSYS
Gail Tucker	Support Services

Around Campus

CEISMC: Preparing Future Scientists and Engineers

By Joey Goddard, OCA

If you thought Georgia Tech students were already the best and brightest, just wait. Thanks to the Center for Education Integrating Science, Mathematics and Computers (CEISMC), we can expect to see even more well-prepared students who want to study engineering, computers, science and math. CEISMC works with students from every educational level to stimulate their interests in science and math related fields and to prepare them for college-level course work in these areas.

CEISMC grew out of several programs designed to recruit underrepresented students to Georgia Tech. "But since then we've taken a broader view, also trying to improve math and science education for those not going to Tech, or even to college, and for Georgia Tech students," explained Aaron Bertrand, interim director of CEISMC. "The goal of CEISMC is to enhance science and math education at all levels."

To this end, the center has established two missions. The first is to work at Georgia Tech to improve introductory science and mathematics courses. To encourage innovative approaches in new and existing courses, the center works with faculty members, helping them respond to initiatives from state, federal and private agencies. The center also provides grants to Tech faculty. In the past year CEISMC's focuses have been the conversion from the quarter system to a semester system and educational technology.

The center's second mission is outreach work with kindergarten through 12th grade education systems throughout the state. Through one component of this mission, CEISMC offers professional development programs for kindergarten through 12th grade teachers. These programs not only expose teachers to new advances in science, math and technology — they provide teachers innovative ways to present subject matter.

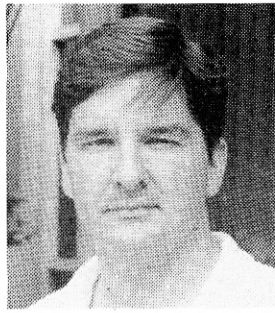
Another component of this mission is to stimulate the interest of kindergarten through 12th grade students in math, science and computers. The center offers programs of general interest to students of all levels, as well as programs for underrepresented students and gifted students.

One program that merges both of these components is SCIQUEST, a summer camp for students and teachers. Teachers attend professional development workshops during the first part of the camp, and then apply what they have learned by acting as instructors when students are in attendance during the second part of the camp.

Continued in August: CEISMIC Helps Teachers, Too.



Vince Calhoun



Jim Cannady



Derya Ozyurt

GTRI Greetings

Welcome to some of our newest employees!

Ten Good Things We Know About Vince Calhoun

1. Vince has worked as a computer services specialist for the Administrative Information System Team since January.
2. He is responsible for maintaining hardware, establishing software configurations and supporting other computer needs in AIST.
3. He received a bachelor of science degree in management from Tech last December.
4. This fall, Vince plans to return to Tech for a master's degree in computer science. He eventually wants to earn a Ph.D.
5. As a student, he worked for OIT and was in charge of all the DOS clusters on campus.
6. He also worked at the Printing and Photographic Center (PPC) as an undergraduate.
7. Vince grew up in Roberta, Ga., where his parents own and operate a printing shop.
8. He now lives in Cobb County.
9. One of Vince's favorite activities is playing paintball.
10. He also likes doing anything outdoors, particularly mountain biking at Stone Mountain.

Ten Good Things We Know About Jim Cannady

1. Jim joined GTRI in December as a research scientist for the Information Technology and Telecommunications Laboratory (ITL).
2. Along with designing databases and Windows-based software, Jim does research on information security, particularly protecting information on the Internet and on military systems.
3. Jim has a bachelor's degree in criminal justice from Georgia State University and a master's degree in information systems from Nova Southeastern University in Fort Lauderdale, Fla.
4. Before coming to GTRI, Jim spent four years as a detective in the Cobb County Police Department and nine years as a special agent for the Naval Investigative Service (NIS).
5. A counter-intelligence officer, Jim was stationed in Japan and Iceland during his duty with the NIS.
6. While living in Japan, he also worked with the U.S. Secret Service in the protection of former presidents Carter and Bush and vice presidents Quayle and Gore.
7. He grew up in Athens, where he now lives with wife Shelley and five-year-old daughter Noelle.
8. He and Shelley met in Japan, where she was also a naval intelligence officer. Currently, she is working on a master's degree

in landscape architecture at the University of Georgia.

9. In his spare time, Jim is a volunteer for Habitat for Humanity.
10. Jim, has a second degree black belt in Tae Kwon Doe and enjoys motorcycles and amateur astronomy.

Ten Good Things We Know About Derya Ozyurt

1. Derya has been a graduate research assistant in Electro-Optics, Environment, and Materials Laboratory (EOEML) since January.
2. One of his research interests is studying industrial processes to find ways of reducing environmental pollution.
3. He is a student in the doctoral program in chemical engineering.
4. Derya has a bachelor's degree in chemical and industrial engineering from Bogazici University in Turkey.
5. His siblings are also studying chemical engineering. His brother is working a doctorate from the University of South Florida in Tampa, Fla., while his sister works on a bachelor's degree in Turkey.
6. Derya's father is the captain of a Turkish trade ship.
7. As an undergraduate, Derya worked part time at a jewelry shop and was also an intern for a pharmaceutical company, a telecommunications company and a refinery.
8. This is Derya's first time living in the United States.
9. He is engaged to Pembe Hande Ozlinder, who is working on a master's degree in molecular biology and genetics at Bogazici University.
10. Some of his hobbies include power yoga and photography. He also enjoys music, especially playing the drums.

GTRI News & Information on the World Wide Web

A wide range of GTRI news and information is available through the World Wide Web:

- GTRI home page:** <http://www.gtri.gatech.edu/>
- 1995 GTRI Annual Report:** http://www.gtri.gatech.edu/95ann_to.htm
- Research position listings:** <http://www.gtri.gatech.edu/res-fac.html>
- Research Horizons Magazine:** <http://www.gtri.gatech.edu/res-hor/rh-welcome.html>
- Georgia Tech Research News:** <http://www.gtri.gatech.edu/res-news/rchnews.html>
- Georgia Tech Research in the News:** <http://www.gtri.gatech.edu/innews.htm>
- Georgia Tech Research home page:** <http://www.gatech.edu/research.html>

Updated GTRI Technical Journal to Reappear in Electronic Form on Web

By Henry Paris, EOEML

The former *GTRI Technical Journal* is reappearing on-line as the "*Journal of Technology*." The *Journal of Technology* will address core technologies of GTRI and strategic initiatives representative of the research in each laboratory, center and focused research activity. It will be available on GTRI's World Wide Web home page at <<<http://www.gtri.gatech.edu>>>.

The *Journal of Technology* will provide a public, electronic forum for in-depth presentation of appropriate technical accomplishments of GTRI. The expected readership of the journal includes peers, sponsoring organizations and potential sponsoring organizations, as well as casual readers. The Journal will contain both conventional and multi-media publications.

Henry Paris, the technical editor, and John Toon, the managing editor, expect that the main purpose of the *Journal of Technology* will be to stimulate interest in GTRI research products as well as productive technical exchange in the classic spirit of the pursuit of intellectual knowledge.

The new electronic journal will make its inaugural appearance in late June. The *Journal of Technology* will rely on each laboratory to assess, identify and provide technical content with appropriate sponsor review and approval, where necessary. All GTRI researchers are encouraged to forward candidate articles for publication to your laboratory director or representative.

The *Journal of Technology* will provide a lay language abstract of each project, along with a more technical description. This combination makes the electronic publication useful to specialists, and also to readers without a detailed technical background in the topics described. It will be integrated with, and linked to, other publications such as *Research Horizons* magazine and the *GTRI Annual Report* to provide a complete picture of GTRI's accomplishments and technical expertise.

Coleman

From page 3

anniversary of AFCEA and Coleman believes it's a good time to expand the group's audience to include additional businesses and government agencies interested in the technologies AFCEA works with.

"AFCEA is in an expanding area," Coleman said. "My hope is to find a way to reach out to the many businesses and organizations in that area."

If you'd like to learn more about AFCEA, you may contact Coleman at 894-8959 or jim.coleman@gtri.gatech.edu.

**Focus
on
Folks**

Focus on Folks

Professional Activities

Electro-Optics, Environment and Materials Laboratory

Bob Schwerzel attended the Pacific Northwest Fiber Optic Sensor Workshop in Portland, Or., May 8-9.

Rich Combes presented "From Henry Grady to the Georgia Research Alliance: A Case Study of Science-Based Development in Georgia" at the International Conference on Policy for Science-Based Development in New York City on April 25. The conference was conducted by the New York Academy of Sciences, with sponsorship from the Carnegie Corporation of New York and the MacArthur Foundation.

John Nemeth presented "Environmental Applications Research and Future Plans in Plasma Arc Technology at the Georgia Institute of Technology" at the Cairo Fifth International Conference on Energy and Environment, June 3-6, in Cairo, Egypt.

In May, **Ted Doll** presented a paper titled "Pattern Recognition Based on Complex Spatial-Frequency Channels" at the Society for Information Display Conference in San Diego. Co-authors are **Shane McWhorter**, **Kathy Schlag** and **Dave Schmieder**.

Claudia Huff served as a judge at the International Science and Engineering Fair in Tucson, Ariz., May 7-8. She was on a team of judges representing the Society for Technical Communication. Leigh McElvaney reported on the working meeting "Toward a National Strategy for Industrial Pollution Prevention Training" at the Education, Training and Learning Work Group of the National Pollution Prevention Roundtable, held April 9-12 in Washington, D.C.

John Pierson and **Leigh McElvaney** presented "Using Multiple Communication Methods to Disseminate Information about Technical Research" at the 43rd Annual International Conference for the Society for Technical Communication, held May 5-8 in Seattle, Wash. At this conference **Mark Hodges** presented "Interactive Multimedia in Communicating Research Information." Hodges and **Dara O'Neil** presented "Keys for Effective Management of World Wide Web Sites."

David Jacobi, **Jim Walsh** and **Paul Schlumper** gave a seminar on Environmental and Occupational Safety and Health to industry in the Rome, Ga. area. This daylong seminar was presented by Georgia Tech and Georgia Power as part of the Georgia Manufacturing Extension Alliance.

Kirk Mahan and **Paul Schlumper** were invited speakers at the annual IIE (Institute of Industrial Engineers) conference in Minneapolis, Minn. on May 20. **Paul Schlumper** spoke on "International Standards Activity in Environmental and Occupational Safety and Health" and Kirk presented a session on "OSHA Compliance."

Gisele Welch attended the Joint Department of Defense Advance Planning Briefing to Industry April 30-May 2. This was a briefing to industry by STRICOM/NAWCTSD/USAF TSPG.

Gary Gimmestad attended the 29th International Symposium on Automotive Technology and Automation June 3-6 in Florence, Italy. Gimmestad chaired two sessions in the Conference on Road and Vehicle Safety, and presented a paper on "The Georgia Automated Adverse Visibility Warning and Control System." The paper was co-authored by **Wayne Daley**, **Richard Carey** and **Ed Patterson** (EOEML), **Mike Kelly** (ELSYS), **Bruce Harvey** (ITL) and **Peter Parsonson** (CEE).

Information, Technology and Telecommunications Laboratory

Jim Coleman presented "Migrating Joint and Coalition Forces toward Information Interoperability" at the 18th Annual AFCEA / NRAD Joint C4I (Command, Control, Communications, Computers and Intelligence) Symposium, May 7 in San Diego, Calif. The symposium addressed embedding C4I technology into future platforms. Jim also recently was selected to be the regional vice president for the Armed Forces Communications and Electronics Association, Georgia region.

Aerospace Sciences Laboratory

In April, **Rob Michelson** was asked to brief NASA's Mission to Planet Earth Office (Code Y) and Office of Aeronautics (Code R) on the subject of unmanned aerial vehicles for high altitude stratospheric and tropospheric science missions. Michelson was lead author on a paper co-authored by **Krish Ahuja** and **Jim Scheer** entitled "Feasibility of Applying Radio-Acoustic Techniques to Non-Line-of-Sight Sensing." It was published in the AIAA Journal of Aircraft, March-April 1996. In January he appeared on "Scientific American Frontiers" with Alan Alda in a show called "Flying High," which aired on most PBS stations across the nation. He was part of the "Ask the Scientists" forum on America On-Line, responding to questions about aerial robotics from science teachers and students who received the Scientific American teaching guide sponsored by GTE and distributed to most U.S. high schools and middle schools.

Personnel News

New Hires

STL welcomes **Charles Brooks**, Student Assistant; **Brian Cieszynski**, Student Assistant; **Tami Reed**, Student Assistant; **Brian Rundle**, Student Assistant; **Robert Shilvey**, Student Assistant; and **Heather Streaker**, Student Assistant. SDL welcomes **Richard Brown**, Research Engineer I; **David Kuechenmeister**, Research Engineer II; **Mark Juliano**, Research Associate I; and **Stephan Fuss**, Research Engineer I. EOEML welcomes **Wusheng Tong**, Research Scientist II. AERO welcomes **Clifford Eckert**, Senior Research Associate. Research Operations welcomes **Sally Griffin**, Student Assistant. ITL welcomes **Mary McGill**, Research Scientist I. ELSYS welcomes **Keith Rabin**, Student Assistant. SSD welcomes **Stephen Sandiford**, Student Assistant. AIST welcomes **Gregory Wright**, Student Assistant.

Moving On

Jamy Barr and **Michael Cooper** (ELSYS); **Preston Bates**, **Dawn Evangelista** and **Duane Hixon** (AERO); **Beverly Cooks** (STL); **Daniel Dipasquale** and **Isadore Fox** (EOEML); **Gintautas Jazbutis** (ITL); and **Michael Nelson** (HRO) are moving on.

Transfers

Fred McKeen, Research Engineer II, transferred from ELSYS to STL effective April 3.

New Responsibilities

William Rogers became the division chief for the System Evaluation Division of ELSYS on Jan. 1. **Harry Andrews** is the associate division chief.

On July 1 **Terry Tibbitts** will become division chief for the System Engineering Division of ELSYS. **Katharine Schlag** will be the interim associate division chief.

Helping Others

Suzette Willingham (EOEML) and **Matthew Malok** (EOEML) of the Training Programs Office recently registered participants for "Christmas in April," a program designed to help inner-city elderly and disabled homeowners with property renovations. Suzette and Matthew participated as members of the Society of Governmental Meeting Professionals who joined other Atlanta organizations in this worthwhile endeavor. **Myrtle Turner-Sippio** and her daughter, **Jennifer**, **LaVerne Spearman** (Supply Services), and **Gloamy Lee Sang** (Research Security) volunteered as part of the labor force.

Super Student

Mary Lynn Munn, assistant in the Manufacturing Program Office of ITL, will serve an internship at Ernst and Young this summer. While that company shuts down for the Olympics, she will work for Budweiser in guest logistics at the games. Mary Lynn is finishing her junior year in the School of Management.

The GTRI Connector
Vol. 12 No. 8 June/July 1996

Published by the Research Communications Office, Centennial Research Building, Georgia Institute of Technology, Atlanta, GA 30332. Georgia Tech is a unit of the University System of Georgia. The deadline for submitting copy is the first Tuesday of each month.

EDITOR

Lea McLees, RCT
894-4259

GRAPHIC DESIGN

Charlotte Doughty, RCT
894-6965

EDITORIAL REVIEW

Charles Brown, RSF
894-3516

ASSOCIATE EDITORS

Miriam Crenshaw, ERB
894-3523

Ann Dunchew, ELSYS
894-3592

Carey Floyd, Cobb 1
528-7070

Delora Gould, SSD
894-3408

Maggi Harrison, Cobb 2
528-7826

Lee Hughey, AIST
894-9621

Joanna King, Baker
853-0460

Diane Smith, O'Keefe
894-0024

Janice Porter, VPDIR
894-3401

Melanie Price, SEAL
528-7915

Jennifer Tate, RSD
528-7808

Gail Tucker, RSF
894-3500



This publication is printed in part on recycled paper.