

The GTRI Connector

Did You Know...

One million stray dogs and about 500,000 stray cats live in the New York City metropolitan area.

Of all the world's peoples, the only ones known to not use fire are the Andaman Islanders and the Pygmies.

-- from *2210 Fascinating Facts* by David Louis

Vol. 12 • No. 4

Published Monthly for the Georgia Tech Research Institute Family

February 1996

GTRI Tests Security for First On-Line Bank

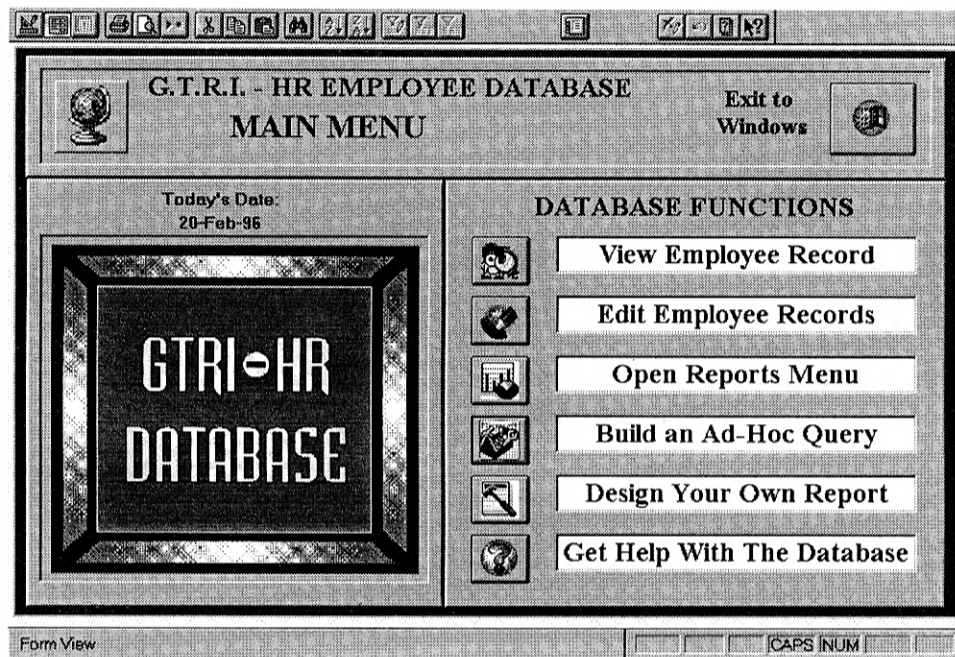
By Lea McLees, RCT

The first on-line bank on the Internet, Security First Network Bank, began operations in cyberspace in mid-October with help from GTRI computing experts.

Gary Tjaden (ITL) identified the opportunity and handled sponsorship. GTRI researchers Myron Cramer (ELSYS) and Jay Harrell (ITL) conducted an independent verification of the bank's security before it went on line.

Cramer and Harrell helped the bank optimize its computer configuration, and verified that its systems properly restricted access to user accounts. Based on their review, the bank received final permission from the U.S. Office of Thrift Supervision to begin Internet operations.

Unlike any other attempt at Internet commerce, Security First provides special multilayered secure software that creates an individual "bank vault" for each customer's account. SecureWare Inc. of Atlanta developed the trusted operating system Security First uses. Deposits at Security First are insured by the Federal Deposit Insurance Corp. (FDIC), just as they would be in a traditional brick-and-mortar bank.



GTRI's new personnel database, the main menu of which is shown here, helps PST query and answer questions quickly and efficiently. (Graphic courtesy Angelle Hammond St. Julien and Donald Carder)

Efficient, Speedy New Database Set Up in PST

GTRI personnel data is at the Personnel Support Team's (PST) fingertips now — literally! The groundbreaking GTRI Employee Database consolidates data previously housed in an Activities Database and on M204, says PST manager Eunice Glover.

The GTRI Employee Database contains current and historical data on all GTRI employees, including students. Donald Carder (PST) and Angelle Hammond St. Julien (AIST) developed the database using Microsoft Access 2.0.

Before the GTRI Employee Database was developed, PST had to depend on downloaded information from M204; create a dBase file to combine the data with

activities database data; manipulate the data by manually adding information; and then import the data into an Excel spreadsheet to get a standard report. The "Current Status" report, for example, which provides a crosstab summary of the GTRI population, used to take an estimated 40 person hours to produce. With the GTRI Employee Database, it is generated in less than one minute.

The GTRI Employee Database provides PST with desktop data in a spreadsheet format that's easy to view, query or print. Finding out "How many administrative coordinators are employed in GTRI?" or "Who are the adjunct employees?" is no problem, says Vicki Speights, a human resources information specialist in PST.

The application makes available a number of features including importing and exporting data, and creating graphs and

Continued on page 7

Observed & Noted

Need an electronic copy of GTRI's new logo? Have questions on its use? Look at page 3 for answers.

Co-op students living in the dorms will be interested in this month's Olympic question. See page 3 for the inquiry and its answer.

Want your travel arrangements to be hassle-free? Turn to page 3 for tips on making things go as smoothly as possible.

Giselle Welch has joined the ranks of Junior Research Faculty Leaders at GTRI. To learn

more about her work, see page 4.

GTRI is cultivating collaboration; our researchers are helping to organize a vehicular technology conference; and you are invited to an electronic warfare meeting in Washington state. For details, look at page 4.

Know a colleague who deserves recognition? He or she may be eligible for one of the 1995-96 Faculty Awards outlined on page 5.

Tom Horton has new responsibilities for GTRI in commercial business development.

To learn about what he'll be doing and how he can help you, see page 5.

Ever wonder what retirement is like? Six of our retirees wrote in to tell us - catch up with them on page 6.

Amanda Crowell, a

new writer in RCT, will soon become a familiar face. Learn about her background and plans on page 7.

The back page is filled with professional, personnel and personal news. Flip The Connector over for the latest updates!

News & Notes

Meet Fiscal Services

The Fiscal Services Department, managed by Barbara Walsh, has two areas: financial services and research accounting. Last month we continued our visit by meeting some of the folks in the larger of the Fiscal Services groups, the 11-person research accounting group, managed by Billy Atcheson.

Among research accounting's duties are: keeping financial records and producing monthly reports for GTRI executives, lab directors and project directors; processing all employee time sheets; processing travel expenditures and consulting agreements; and, of course, disbursing and tracking petty cash.

Tam Muto, an Accountant II working on Julie Blankenship's team, has worked in GTRI accounting for 11 years. Her responsibilities include maintaining and establishing GTRI accounts, preparing and distributing sponsor invoices, processing cost transfers, budgets and ensuring contractual financial compliance. Tam was born in Vietnam and came to the United States in 1975. Her father was in the U.S. Army, and Tam lived for some years in Huntsville, Ala., before moving to Atlanta. She attended Young Harris College in North Georgia before joining GTRI. Today she and her husband, Tadashi Muto, live in Norcross with their two boys, ages 8 and 4. Tam says it seems like "hauling my children around and watching their



Tam Muto



Abbie Hendricks

games" is her main spare-time activity.

Abbie Hendricks is an Accountant I with 14 years total service in the GTRI accounting area. A member of Gedney Vining's team, Abbie processes all GTRI timesheets and makes sure that employees are paid correctly. She also oversees distribution of project funds. Abbie and her husband, Bobby Hendricks, live in Lithia Springs and have four children. In spring and summer, Abbie and Bobby enjoy tenting and boating, especially at West Point Lake and Lake Allatoona. Abbie, an Atlanta-area native, enjoys bowling and crocheting in winter months. She also spends considerable time visiting with her two grandchildren. "They keep me hopping," she says.

Betty Moss, an Accountant II, has been with Georgia Tech for 27 years, mostly with GTRI, and has spent 18 years in her current position as a GTRI accountant. She works on Julie Blankenship's team, and her duties center on sponsored contract administration: interacting with Management and Project Support (MAPS), billing, adjusting budgets, correcting charges and closing out projects. Born and raised in the Atlanta area, Betty lives in Jonesboro with Edward, her husband of 40 years. The Mosses have two daughters and six grandchildren — two boys and



Betty Moss



Janice Green

four girls, ages 2 to 16. She says her hobby is family in general, and especially visiting with the grandchildren and her mother. Betty says she is "fortunate that I enjoy my work. I couldn't imagine going to work at something I didn't enjoy."

Janice Green is an Accountant II with 11 years experience with GTRI. Like other members of Julie Blankenship's team in Fiscal Services, she assists GTRI labs via administration of state and sponsored projects. Janice holds a bachelor's degree in business administration from Georgia State University, as well as an associate's degree in accounting management from Atlanta Metropolitan College and a certificate in accounting from Atlanta Area Technical School. Reared in the Augusta area, Janice moved to Atlanta in 1970. Today she and husband Willie live in south Fulton County with their two sons, ages 9 and 7. Janice is active in civic life: she is president of Delta Chapter of the Iota Phi Lambda service society; works with the Task Force for Fulton County; coaches T-ball and does other Fulton County recreational work; is a recent past president of her local homeowners association; and is active in her local PTA, as well as numerous other civic organizations. She also enjoys bowling, traveling and reading.

SELECTED JANUARY 1996 AWARDS

Title	PI/Laboratory	Sponsor	Funded Amount
Low-Speed Eval./Aero. Char. of Adv. Powered-Lift Cnfg.	Englar, R. (AERO)	Lockheed Aeronaut. Sys. Co.	\$ 46,506
R, M&S Analy. for MH-60G, UH-60 A/L & MH-60K Struct....	Crawford, C. (AERO)	SAIC	98,599
Model-Scale Tests for Jet/Collector Interactions...	Ahuja, K. (AERO)	Boeing Aerospace Co.	60,000
Vibration Screen Analy. and Test Prog. Eng. Services Prop.	Wasikowski, M. (AERO)	GNB Technologies	19,911
Electronic Warfare Techniques Analysis	Rogers, W. (ELSYS)	Air Force	169,347
ECIT Infrastructure & Generic Test Capability - Rev. I	McDougal, G. (ELSYS)	CTA Inc.	100,000
Experimental Study of Tilt Angular Anisopalantaic Correlation & The Effect...	Belen'kii, M. (EOEML)	Air Force	25,000
DISAMS/GTSIMS Verification & Correlation & IRCMSS Upgrades	Mullikin, A. (EOEML)	CAS Inc.	245,777
Infrared Countermeasure Simu. Sys. (IRCMSS) Upgrade	Lamm, D. (EOEML)	Army	239,748
Effective Implementation of "COPS MORE" Program	Witten, M. (ITL)	Atlanta Police Dept.	18,188
Dev. of Concepts for Interactive Photo Editing...	Collins, D. (ITL)	Eastman Kodak Co.	16,309
SWBS Phase 3	Pennywitt, K. (ITL)	Logicon Eagle Technology	451,142
High Level Architecture Testing and Support	Loper, M. (ITL)	Army	127,380
(U) Adaptive Communications for Integrated Avionics	Moss, R. (ITL)	Air Force	200,000
Waveform Simulator Operations Support	Kerr, R. (SDL)	Lincoln Laboratory	200,000
Prop. for In-Situ Deter. of Acoustic Parameters	Caille, G. (SEAL)	Navy	120,000
Nearest Residual Vector Quantizer Classifiers...	Barnes, C. (SEAL)	Navy	49,990
Russian Phase Shifter Study	Mitchell, B. (SEAL)	Navy	24,945
Interim Band Radome Research	Weaver, E. (SEAL)	Navy	24,988
Radar Hardware Development Analysis	Belcher, M. (SEAL)	Army	300,000
Percolating Systems	Moore, R. (STL)	U. S. Dept. of Defense	899,917
Shape Studies	Meadors, J. (STL)	U. S. Dept. of Defense	249,949
Photonic Bandgap Structures	Kesler, M. (STL)	U. S. Dept. of Defense	479,433
Workshops & Documents	Meadors, J. (STL)	U. S. Dept. of Defense	200,000
Extending the Utility of the IR Measurement Range	Swarnar, W. (STL)	U. S. Dept. of Defense	50,000



New Logo for GTRI

Electronic copies of GTRI's new logo are available from the Research Communications Office (RCT). The logo is available in gif, gif photoshop, tif, eps, pict and wmf for Windows, all via e-mail or on disk.

Guidelines for using the new GTRI logo, along with its Georgia Tech counterpart, appeared in an early February insert in *The Whistle*.

Remember: You don't have to throw away items bearing the old logo. Use them up, and then as you re-order stationery, business cards and other materials, just ask the Printing and Photographic Center (PPC) to use the new logo.

To get electronic versions of the logo, call the Research Communications Office at 894-3444. If you have questions about logo use, call the Communications Division's Office of Publications at 894-2450, or fax a copy of your design for the office's review to 894-7214.



Traveling? Here's How to Make Arrangements Smoothly

Conferences, as well as meetings with current and potential sponsors, require many of us to travel by plane frequently. **American Express Travel Service** offers these tips to make arranging your flight quick, efficient and painless:

1. If you only wish to check schedules and fares and our lines are busy, you may contact the Colony Square office. Two other locations, if you wish to stop in, are at The Galleria (952-2484) and Lenox (262-7561). These offices also offer a full range of vacation packages.
2. If you have the information you need and our lines are busy, you may complete a travel request form and fax it to us. We will confirm your requests and follow up with a recap/confirmation call to you within 24 hours. Please call 894-3853 if you'd like some blank forms and our fax number.
3. When you call, please have as much information as possible. The critical elements are: correct dates and times of travel, car/hotel information, and most importantly, the charge numbers or form of payment. If you do not have the proper numbers at the time of the booking, you may call later, leaving the information on voice mail at 894-3399. Give the passenger's name, date of travel and

destination city.

4. Try to have one person make reservations and changes. Otherwise, an additional set of reservations might be created and more than one ticket could be printed, causing double billing and complications.
5. If at all possible, try to make reservations 21 to seven days in advance. This allows us to find lower fares for you. We fully understand that last minute plans do arise, and we will search for the least expensive fares to accommodate your needs.
6. Our courier schedule has changed. We have one scheduled delivery per day leaving our office at approximately 10 a.m. If emergencies arise and the courier has not returned, your help in arranging to have the ticket picked up will be greatly appreciated.
7. Our hours are 8 a.m. to 5 p.m. Monday through Friday. If possible, call early enough for us to thoroughly and properly assist you. Of course, no one will be declined service when we answer.
8. Please call with personal travel inquiries between 8 and 11 a.m., preferably Tuesday through Thursday. Because of advance purchase restrictions and work schedule time constraints, we know this is not always possible. If you are unable to reach us, you may contact our Colony Square office at 892-8175.

Countdown to 1996

How long will co-op students be allowed to stay in the Georgia Tech dorms?

All students must be moved out of the dorms by June 8, according to the Georgia Tech Housing Department. This date is applicable to all students, co-op and non-co-op.

What's Up?

Share your professional news with *The Connector*. You may send presentations, publications, awards or other announcements to any of the associate editors listed in the bottom left corner of page 8. Or, use e-mail, lea.mclees@gtri.gatech.edu; campus mail, Connector News, RCT/GTRI, MC 0828; phone, 894-4259; or stop by Rm. 223 CRB.

News & Notes

GTRI participated in the historic agreement between Charlotte, N.C.'s Johnson C. Smith University (JCSU) and Moscow State University -- the first collaboration between Moscow State University and a historically black college or university (HBCU). Left to right: Vic Tripp (SEAL), Chris Papanicolopoulos (SEAL), Hampton Wright (Head, Division of Science and Mathematics at JCSU), Judge Francis I. Parker (JCSU Board of Trustees), Yuri A. Pirogov (Moscow State University), Dorothy Yancey (JCSU President and former Georgia Tech professor), Bob Zimmer (former Georgia Tech HBCU coordinator), Magdy Attia (JCSU professor and principal investigator on JCSU, Moscow State, Georgia Tech collaboration). (Photo courtesy Bob Zimmer)

Focus on Research

Giselle Welch's studies allow her to apply her electrical engineering expertise to optical systems.
(Photo by Rick Robinson)

Welch Named Junior Research Faculty Leader

By Rick Robinson, RCT

A scientist specializing in optical imaging systems and atmospheric turbulence has joined GTRI as a junior research faculty leader.

Giselle Welch has been hired by EOEML as a Research Engineer II. She joins Margaret Loper of IITL, Lisa Lust of STL and Robert Funk of AERO as charter members of the Junior Research Faculty Leader Program.

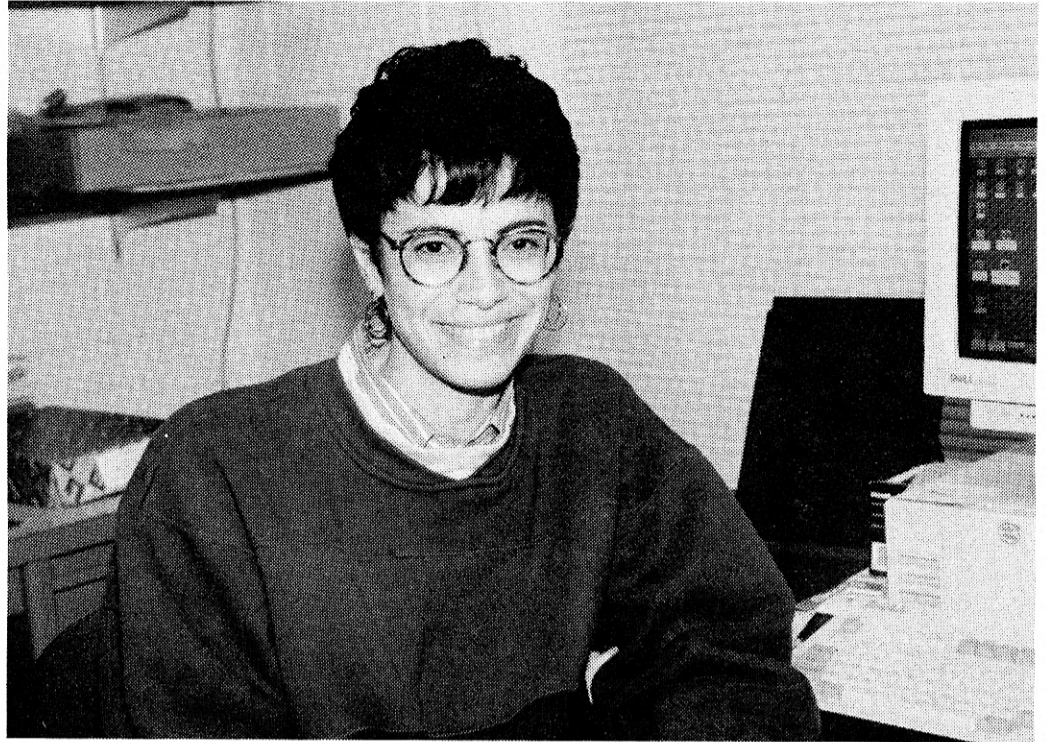
Welch received a doctoral degree in electrical engineering from Georgia Tech in September 1995. She had been working for GTRI since April 1992 as a GRA.

"Ideally I would like to apply the work I did for my dissertation research to industrial applications," Welch said recently.

Her doctoral thesis research was based on two seemingly disparate optical imaging systems that are in fact closely related, she said. One system exploits enhanced backscatter to form images of objects by atmospheric turbulence, while the other achieves optical superresolution through a form of coding and decoding somewhat analogous to bandwidth compression.

Welch explained that her superresolution research could, for example, lead to improvements in endoscopy equipment used for diagnosis and treatment within the human body. Her work in the area of enhanced backscatter may be used for tracking objects obscured by turbulence.

Under the Junior Research Faculty Leader Program, GTRI hires people whose early research careers show strong levels of accomplishment and promise. Junior



research faculty leaders typically have less than 10 years experience and are tasked to develop a nationally recognized program with major impact on GTRI. This program, outlined in the latest edition of the *GTRI Policies and Procedures Manual*, draws support from a combination of laboratory, sponsor and short-term research operations funds.

Born in Senegal, Africa, to Lebanese parents, Welch came to the United States around age 5. She spent most of her formative years in the Orlando, Fla., area, and received bachelor's and master's degrees in electrical engineering from the University of Central Florida, though she performed much of master's research at the University of California at San Diego.

It was high school physics that launched Welch on her science career. "I enjoyed learning and understanding why things work," she recalled.

In college she pursued an electrical engineering major because of the many career paths it offered. However, during her doctoral studies, Welch said, a speciality in optics allowed her to apply her electrical engineering discipline to optical systems.

"A speciality in optics has allowed me to combine physics, signal processing, and mechanical engineering under one research topic," she said.

Among Welch's many activities in recent years, she singles out a Georgia Tech School of Management program that she completed recently: the Certificate in the Management of Technology. "It was a great program," she says, "one of the best things I've done in terms of career advancement."

In addition to international travel, Welch's other off-hours interests include pets — a Doberman and two champion Maine Coon cats — and a burgeoning collection of fountain pens.

In Brief...

GTRI Represented in Vehicular Technology Conference Planning

The 46th annual IEEE Vehicular Technology Conference (VTC), sponsored by the IEEE Vehicular Technology Society and the IEEE Atlanta Section, is scheduled for April 28-May 1 at the Westin Peachtree Plaza Hotel. The program will follow the usual VTC format, with special emphasis on technologies showcased during the 1996 Summer Olympics.

Glenn Hopkins (SEAL-GTRI), Mike Witten (ITL-GTRI) and Bruce Harvey (ITL-GTRI) are serving as secretary, publicity chair and registration chair for the conference, respectively. Two ECE faculty members are chairpersons for the conference: Gordon Stuber, technical program, and John Barry, publications.

23rd Annual Tactical Electronic Warfare Symposium Planned

WHIDBEY ISLAND, Wash. — "The expanding role of the electronic combat warrior" is the theme for the 23rd Annual Tactical Electronic Warfare (EW) Symposium at Naval Air Station - Whidbey Island, Oak Harbor, Wash., May 20-23.

Hosted by the EA-6B Prowler community, the symposium's agenda features five sessions addressing tactical and strategic matters. Organizers expect the program to highlight some of the most critical issues facing the U.S. electronic warfare community now and into the 21st century. More than 600 military and civilian representatives attended last year's symposium.

Sponsors of the event are Tactical Electronic Warfare Squadron 129 and the Prowler Roost of the Association of Old Crows.

If you have questions about the symposium, you may call electronic warfare officer A.J. Assel at (360) 257-8159. For details and registration packets, you may call Paula Gough at (360) 257-2793. SECRET clearance is required.

Cultivating Collaboration

Researchers and lab directors from GTRI met with Electrical and Computer Engineering (ECE) colleagues on Jan. 16 to share their research and explore opportunities to work together on projects.

The cross-briefing was organized by Demetrius Paris of ECE and Jim Cofer (APO).

"GTRI has so much in common with ECE that we decided to get together and

see if there is more we can do to expand collaboration — things like joint proposals and shared research," Cofer said.

GTRI and ECE researchers gave five-minute overviews of each of eight GTRI labs and 10 ECE technical areas, respectively. Researchers who already have collaborated discussed the advantages and challenges of working together. Attendees now are assessing what they heard and looking for ways to collaborate in the future on bids and proposals, Cofer said.

"This is the first time we've done this that I know of," Cofer said. "It can enhance our work together, and the end result should be more collaboration, and more research money coming into Georgia Tech."

GTRI participants included Cofer, Bob Cassanova, Randy Case, John Meadors, Bud Sears, Bob Trebits, Jeff Sitterle and Bill Owens.

GTRI also wants to set up cross-briefings with other schools and colleges, including Aerospace Engineering, Mechanical Engineering, Civil Engineering and Computing. Anyone interested in arranging or participating in a future cross-briefing may contact Cofer at 894-3346 or at jim.cofer@gtri.gatech.edu.

Applications Due March 25 for Emory/Georgia Tech Collaborative Grants

Georgia Tech researchers who collaborate with Emory University colleagues on biomedical projects are eligible for funding from the Emory/Georgia Tech Biomedical Technology Research Center.

To be considered, a proposal must have at least one co-principal investigator for each institution. Each investigator must be a full-time permanent faculty member, assistant professor or higher, or the equivalent research rank.

Funding opportunities include:

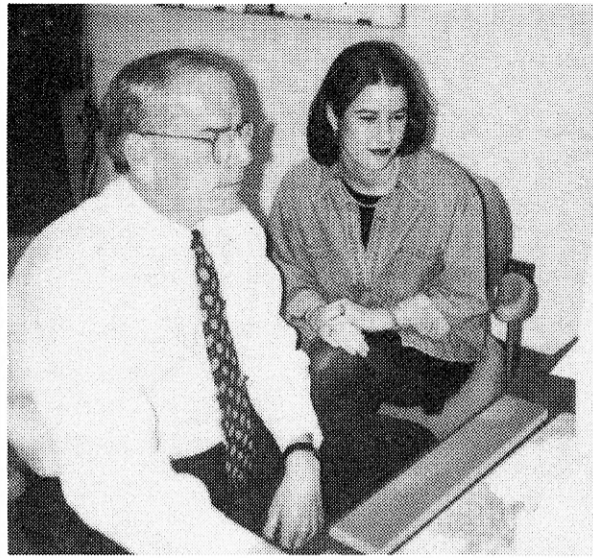
Seed Grants Program: Stimulates new research contributions and ideas. At least one of the co-investigators must not have been funded previously by the Emory/Georgia Tech Center. Requested budget should not exceed \$30,000.

Established Collaborator Program: Aids an established collaboration that has made substantial progress, but has not yet received external funding. Documentation should include a copy of a complete proposal for funding already or soon to be submitted to an outside agency, such as the National Institutes of Health or the National Science Foundation. If the proposal has been submitted and reviewed, a copy of the review should be included. A jointly published manuscript or letter of acceptance also is considered evidence of established collaboration.

Proposals to the Emory/Georgia Tech Center should specifically describe the work and the budget required to continue the project, not to exceed \$30,000.

Medtronic's Synergy Program: Stimulates research collaboration in the cardiovascular and neurological areas with particular interests in electrical stimulation and vascular therapies. Novel concepts involving medically needed implantable devices also are of interest. Proposals in these areas may be considered for this program, as well as for seed grants or established collaborator funding.

Applications are due by 4 p.m. March 25. For more information, contact Ajit Yoganathan, co-director of the Emory/Georgia Tech Biomedical Technology Center, at 894-2849 or send e-mail to ajit.yoganathan@che.gatech.edu.



represents a different customer culture, and it is a market GTRI plans to make a concerted effort to penetrate.

Tom will draw on the experience of those who have worked with industry across all GTRI labs, and build a reference database of industrial interactions. He also will develop and implement a business plan for the rest of FY 96 and all of FY 97, outlining target areas for development, with input from GTRI's External Advisory Council and others. Horton's initial focus will be on information technologies. He will work closely with GTRI's New Initiatives Groups to support their efforts, each of which has a strong information technology component.

Horton's outreach efforts will exploit collateral business opportunities. He will work with the appropriate laboratory until a contract is secured. To ensure maximum coordination and effectiveness, Horton will develop an ongoing dialogue with business development offices across the campus and within the GTRI laboratories.

You can reach Tom Horton in ERB Room 118, by phone at 894-0239, or via e-mail at tom.horton@gtri.gatech.edu.

Nominations Sought for 1995-96 Faculty Awards

Know a colleague who fits any of the following categories? If so, the Faculty Honors Committee wants to hear from you. The committee seeks nominations of faculty members for the following honors:

Distinguished Professor Award: Established by the Class of 1934, this is the highest campus award a faculty member can receive. It recognizes sustained outstanding achievement in teaching, research and service, and includes a \$15,000 stipend.

W. Roane Beard Outstanding Teacher Award and W. Howard Ector Outstanding Teacher Award: Nominees must have taught at least six quarter-hours during the 1994-95 academic year. The Class of 1940 provides \$5,000 to each honoree.

The FRCP is funded by the State of Georgia and administered by ATDC, a business incubator for start-up technology companies. Awards of up to \$100,000 per project are available to propel promising technologies from concept to full-featured prototype. Academic and research faculty members involved in projects that are close to market or have commercial potential are eligible for funding.

For further information or answers to questions, contact Mary Leary, FRCP program manager, at 894-3575 or mary.leary@edi.gatech.edu.

Horton Takes on New Responsibilities

Tom Horton has been named manager of commercial business development for GTRI. He transferred from the Information Technology and Telecommunications Laboratory to the Advanced Programs Office, and now reports to Jim Cofer.

Horton will expand current commercial industry contracting efforts. The potential industry R&D market is very large; however, it

Focus on Research

Tom Horton, left, joined here by management student Mary Catherine Wall, will expand GTRI's commercial industry contracting efforts. (Photo by Lea McLees)

Outstanding Service Award: The winner of this award has benefitted the Institute, profession, school, department or general public in an exemplary manner. The Office of the Executive Vice-President provides \$5,000 to the recipient.

Outstanding Interdisciplinary Activities Award: Nominees must have made significant interdisciplinary contributions to teaching and research. Multiple names may be nominated to share the award. The Class of 1934 provides a \$5,000 stipend.

Outstanding Continuing Education Award: Nominees have made significant contributions to the Institute, profession, industry/government and/or general public in continuing education. The Department of Continuing Education provides a \$2,000 award.

Guidelines for nomination, eligibility and other information are available from Tanya Barber at 894-7589.

Nominations must be sent by March 29 to:

Stacy Schultz
Assist. to the Faculty Honors Comm. Chair
Georgia Institute of Technology
School of Electrical and Computer Eng.
Atlanta, Ga. 30332-0250
Telephone: (404)894-2920
E-mail: stacy@eedsp.gatech.edu

FRCP Deadline Reminder

If you're applying for funding from the Faculty Research Commercialization Program (FRCP), remember that final proposals are due on March 18. Proposal previews were due Feb. 23.

Proposal preview outlines and the request-for-proposal package are available via the Advanced Technology Development Center's (ATDC) web site at www.atdc.gatech.edu/atdc.html, or by calling Phyllis Hance at 404-894-1700.

Home of the 1996 Olympic Village
Georgia Tech Research Institute

Focus on Folks

Life after GTRI: Retirees Tell Us What They're Up To

By Lea McLees, RCT

When you're up to your eyeballs in e-mail, voice mail, snail mail, proposals, reports, research projects and more, it's sometimes hard to imagine what retirement would be like. On the other hand, sometimes it isn't — tempting visions of hours free for doing what you've always wanted to do abound.

Several retired members of GTRI's extended family recently updated us on what they've done since they said goodbye to the 40-hour workweek. As you'll read below, it seems that many of them are as busy as they were at GTRI — just doing different things!

Tze I. Chiang, who did feasibility studies for IDD, retired from GTRI in 1986. Entering a 10th year of retirement, Tze now spends time reading and gardening at home in Atlanta.

Howard Dean, who was an associate director of GTRI until his retirement in 1988, has spent much of his time traveling touring the world and the United States. He recently spent three weeks traveling from Bangkok, Thailand to Sydney, Australia. Howard also enjoys time with friends and six nearby grandchildren, along with regular exercise and much food. In the last year he has become, in



his words, "completely retired," having not even consulted during that time.

Former Cobb County MAPS manager **Yalcin Peker** and former *Connector* editor **Martha Ann Stegar** have moved from intown Atlanta to suburban DeKalb County since their 1993 retirement. They volunteer one day a week at the Fernbank Museum of Natural History. Yalcin works special exhibits, such as the Chinese dinosaurs and an exhibit on the progress of medicine. Martha Ann is a guide in the "Walk through Time in Georgia" exhibit and the Children's Discovery Rooms. Through Elderhostel, they attended study programs in Ecuador, on the Galapagos Islands, and on the Big Island of Hawaii — on the Big Island, they lived on the side of the Kilauea volcano and studied Hawaiian culture.

This month they traveled with Elderhostel to Antarctica. In their spare time, Yalcin works on his writing and Martha Ann takes courses at Emory and Mercer Senior Universities.

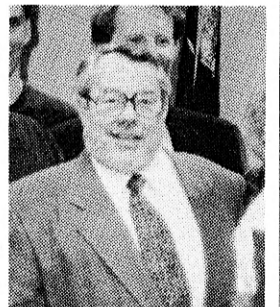
Bill Howard retired in late 1993 as an executive assistant to the associate director. He and his wife Sylvia are enjoying their grandchildren, traveling as much as they can, and helping others through Roswell United Methodist Church and other agencies. Each week they visit with and deliver cassette tapes to people who couldn't make it to church the previous weekend. The Howards deliver day-old bread to North Fulton charities from supermarkets. They provide transportation for people who can't drive themselves places, and Sylvia provides special care for a person who needs help with grocery buying.

"Between family, trying to travel and doing for others, our time is full," Bill said. "We do things together, and we're meeting more new friends every day."

Thomas Jones has accomplished a lot since his relatively recent retirement in January 1994. Formerly a department manager in Facilities Management, he works two days a week for the Economic Development Institute at Georgia Tech. He and his wife Betty are remodeling a 1930s home. They hope to restore it to its original condition — or better. They also stay busy with their three-acre yard and seven cats and dogs.

The Jones are involved with the Cherokee County Historical Society, and Tom was just nominated into the First Family Club of Athens County, Ohio, Historical Society. The couple collects, buys and sells antiques, glassware and coins, and if any free time develops, they travel. During the past year they've cruised to Mexico, visited New Orleans and Ohio, and spent several weeks in Destin, Fla.

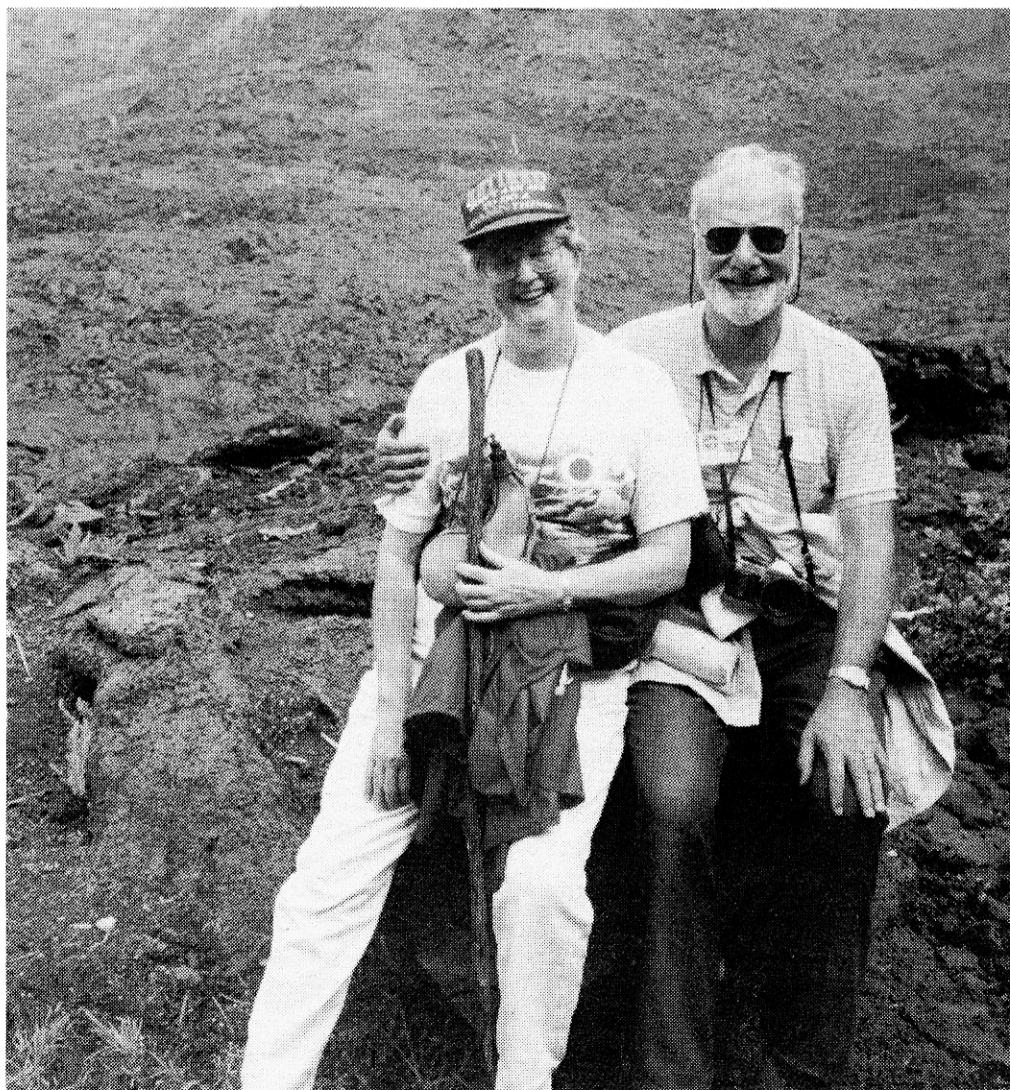
"Like the old saying goes, how did we ever find time to work?" Tom asks.



Tom Jones

Bill and Sylvia Howard, shown here at his retirement, are staying busy with friends, family, traveling and helping others. (File photo)

Martha Ann Stegar and Yalcin Peker visited Hawaii through Elderhostel. (Photo courtesy Martha Ann Stegar)



GTRI Greetings

Welcome to some of our newest employees!

Ten Good Things We Know About Eric Black

1. Eric began work as a graduate research assistant in ITL in September, working for Daniel Howard.
2. He is pursuing a doctorate in electrical engineering at Georgia Tech.
3. At GTRI, Eric recently researched a chaos problem and is currently undertaking the design of optimal wave forms.
4. Eric was raised in Maine, in the small town of Orient on the Canadian border. He says he doesn't miss the snow.
5. He received his bachelor's degree in electrical engineering from the University of Maine in June 1995, graduating with highest honors. He was elected to Phi Kappa Phi honor society.
6. Eric says he came to Tech because he likes the university's emphasis on applied science, and its extensive relationships with industry and government sponsors.
7. Another influence that pulled him in the direction of Tech is his cousin, Robert Black, who is on the faculty of the School of Earth and Atmospheric Sciences.
8. Eric enjoys studying abroad. In high school he went as an exchange student to Japan.
9. Last year he spent six months in the Ukraine, studying Russian at Kharkov University. He says the experience showed him "how privileged we are as Americans, and how many conveniences we have."
10. Here at Tech he's living in a place that's a showplace of convenience: the new Hemphill Residence Hall.



Eric Black



Lou Desetto

Ten Good Things We Know About Lou Desetto

1. Lou began work in September as a graduate research assistant with EOEML in Georgia Tech's Multimedia and Manufacturing Education (MIME) Laboratory.
2. He is developing instructional tools for manufacturing ergonomics, in areas such as workspace configuration and job analysis.
3. His specialties are artificial intelligence and computer graphics.
4. Lou received his bachelor's degree from Tech in June 1995 in computer science, completing the program in three years.
5. He is currently working on a master's degree in computer science in Tech's College of Computing.
6. A number of New York State relatives have preceded Lou in the Atlanta area, and he reports that his younger brother may attend Tech also.
7. He was born and raised near Albany, N.Y., in the town of Guilderland.
8. While a student at Guilderland High School, Lou developed a number of shareware computer games, using the Pascal and Assembly languages.
9. Today he still holds copyrights on a couple of games that are available in CD-ROM shareware collections.
10. He lives in the Dunwoody area. Lou likes the South, and he finds that Atlanta is significantly less congested than New York City or Boston!



Nicole Winter

Ten Good Things We Know About Judith Nicole Winter

1. Since September, Nicole has been a graduate research assistant with EOEML, working in Tech's Multimedia and Manufacturing Education (MIME) Laboratory.
2. She is working toward a master's degree in computer science in the Georgia Tech College of Computing.
3. Nicole's current work for MIME involves setting up a computer environment for a mechanical engineering course that will facilitate learning the M.E. design process.
4. Nicole holds a bachelor's degree in computer science from the University of California at San Diego.
5. She chose Tech for her graduate work because it had "the most variety of everything that I would possibly want to learn about."
6. Nicole was born in London — her parents are English — and she moved to the San Francisco area when she was 9.
7. Both of her parents work in computers — as did her grandfather, who taught using one of the first computers!
8. She notes she is probably "one of the few people who can say they are third-generation computer science."
9. Nicole lives in Atlanta not far from campus, where she does yoga in her spare time.
10. She finds that, with relatives in England and California, she travels a lot. Fortunately, she enjoys it, and recently added Greece and Israel to her itinerary.

Focus on Folks

PST Database

From page 1

labels in record time — with data that is available no other place on campus.

The GTRI Employee Database is the implementation of Phase I of the project, and will serve as a prototype for Phase II. In Phase II, data will be made available throughout GTRI using an Oracle-based application.

"People who need access to the data will have it," Glover said. "The data will be compatible around the institute and will enable us to query and answer questions quickly and efficiently."

As PST moves out of testing and training on the new system, it will be re-evaluating processes that will benefit from this tool. Ultimately, PST would like to move the majority of the processes to an electronic medium.

"We envision a paperless office," Glover said. "This is a first, and it's the tip of the iceberg for PST. We look forward to moving into the 21st century using automated processes, electronic forms and Web technology!"

Angelle Hammond St. Julien gathered information for this article — thanks, Angelle!

RCT Welcomes A New Writer

The next time you stop by or get a call from the Research Communications Team (RCT), you may find yourself talking with a welcomed new member of the staff.

Amanda Crowell, an Information Specialist II, joined RCT on Feb. 5. She will write about Georgia Tech research for news releases, *Research Horizons* magazine and other publications, and will publicize Tech research to interested media.

Crowell comes to Georgia Tech from the *Charleston (W.V.) Daily Mail*, where she reported on education and had covered several other subjects.

"This is something much more specialized than I've done before," she says of her new duties. "It will take me in a different direction, and I think my writing can only grow and improve from it. I also have valuable experience to offer, since I've covered so many different types of news, from industrial accidents to cultural events."

Amanda covered higher education as a free-lancer for *The New York Times* at the University of Alabama, where she studied English, and at schools in and around



Amanda Crowell

Lynchburg, Va. She also worked as a copy editor for *The News and Advance* in Lynchburg.

With Amanda's arrival, RCT now includes writers who have worked for *The Times*, *The Boston Globe* and *The Atlanta Journal Constitution*, as well as a former *Wall Street Journal* copy editor.

Amanda enjoys cooking, fishing, camping and hiking — and being closer to her family in Alabama, now that she's working in Atlanta. Her husband, Robert Woodrum, is a graduate student studying labor history at Georgia State University. Her immediate family also includes four cats and a dog, Dahle — named for the family that owned what is now the Dolly Sods National Wilderness and Scenic Area in West Virginia.

You may reach Amanda Crowell at 894-6980.

Focus on Folks

Professional Activities

Machine Services

Phil Mullins was program speaker for the Inventor Associates of Georgia's Jan. 27 meeting. The presentation covered "Rapid Prototyping of Models and the Concurrent Engineering Process."

Electro-Optics, Environment and Materials Laboratory

Steve Hays is one of five invited members of the Quest for the Best Advisory Board, American Textile Manufacturers Institute (ATMI). Hays also presented "OSHA's Training Requirements" at the Mid-South Business Roundtable's First Quarterly Meeting in Macon on Jan. 25.

Bill Kreiss attended the 34th Annual AIAA Space Sciences Meeting held at the Reno Hilton Jan. 15-19. He was chairman of a session on "Interpretation of Space Imagery." He also presented a paper co-authored with **Mikhail Belen'kii**, "Spatial Structure of Mesospheric Inhomogeneities and Interpretation of Radar Scattering Data." Kreiss participated in the NASA-Industry Partners Working Group for a Common Atmospheric Model for the High Speed Commercial Transport (HSCT). He attended the annual Atmospheric Environment Technical Committee (AETC) meeting, at which he was appointed to the AETC Awards Committee. He is the 1995-96 chairman of the AETC Working Group on Earth Observations and Global Change.

David Jacobi, Paul Schlumper and **Jim Walsh** conducted a one-day seminar on environmental and occupational safety and health regulatory requirements for manufacturers on Jan. 16. This seminar was held at the Georgia Power Technology Application Center. **Daniel Ortiz** and Paul Schlumper presented a 1/2-day seminar on applied ergonomics to industry in the Columbus, Ga., area on Jan. 18. Ortiz also presented this seminar to a group in Dalton on Jan. 25. The above seminars all were conducted through the Georgia Manufacturing Extension Alliance (GMEA).

On Nov. 3, **Nile Hartman** gave an invited talk at the Food Processing Automation Conference IV in Chicago. He discussed "Optical Biosensors for Food Safety and Inspection."

John Nemeth was an invited speaker at the Interstate Technology and Regulatory Cooperation Workgroup Meeting

in New Orleans, La., Jan. 24-26. Representatives from 22 state agencies, numerous federal (DOD and non-DOD) agencies, consultants and other public officials attended. Nemeth spoke on the accomplishments of the U.S. EPA Hazardous Substance Research Centers Program. He highlighted hazardous waste cleanup projects nationwide that have resulted in significant savings of time and dollars. Georgia Tech is a member institution, along with Louisiana State University and Rice University, of the South and Southwest Center.

Sensors & Electromagnetic Applications Laboratory

Susan Dugas and **Dave Millard** were elected to two-year directorships by IEEE Atlanta Section.

On Jan. 14, **Dayton Adams** and **Glenn Hopkins** attended a Technical Program Committee meeting for the 1996 IEEE International Microwave Symposium (IMS). The IMS will be held in San Francisco in June. Hopkins will chair a session on phased and active arrays. at the Mid-South Business Roundtable's First Quarterly Meeting in Macon on Jan. 25.

Personnel News

New Hires

ITL welcomes **James Cannady**, RS I. SSD welcomes **Sandra Lashmit**, Data Entry Clerk II. ELSYS welcomes **Leigh Pendleton**, Student Temp; **Dawn Smith**, Student Temp; and **Sharon Sullivan**, RE I. SEAL welcomes **Kevin Sangston**, SRE. EOEML welcomes **James Suggs**, RS I; **Jared Gossett**, Student Assistant; and **Gisele Welch**, RS II. AIST welcomes **Jeff Corn**, Co-op. SDL welcomes **Chris Elliott**, Tech Temp; and **Mandy Schreiber**, Tech Temp.

Moving On

Bruce Beckloff, **Shelli Godfrey** and **Leslie Jensen-Link** (EOEML); **Rachel Cassidy**, **Mark Hoover**, **Kristy Payant**, **Craig Ruby** and **Karen Shay** (ITL); **Greg Davis** (SEAL); **Willie Dixon** (SSD); **Todd Houseknecht** (ELSYS); and **Rusty Miller** (Machine Services) are moving on.

Transfers

Austin Blochberger, Program Specialist, has transferred from SDL to MAPS.

Personal Notes

Wedding Bells

Jimmy Ross' (Machine Services) daughter, Stacy Friedman, was married Jan. 20 and honeymooned in Hawaii. Jimmy says it's nice to have his house quiet again.

Mark Hodges' (EOEML) son, Chris Hodges, married Dawn Howell in Litchfield Beach, S.C., on Jan. 12.

Cradle Roll

Cecelia and **Duane Patterson** (SDL) welcomed a daughter, Meaghan Leigh, born Jan. 15.

Sandy Kirchoffer (SSD/RPT) welcomed a granddaughter, Jessica Lynn, born Jan. 18.

Rene and **Martin Mannion** (SEAL) welcomed a daughter, Rachel Catherine, on Jan. 16.

Our Sympathy

...to **Dale Nordin** (SDL), whose father died Jan. 30.

...to **Mark Entrekin** (SDL), whose mother died Jan. 28.

...to **Harold Knouse** (SDL), whose grandmother died in late January.

...to **Nancy Kelley** (EOEML), whose husband, Edward, died Feb. 10.

OSHA Seminars Offered

Steve Hays and **Kirk Mahan** will be presenting a series of five OSHA Compliance/Safety Awareness seminars.

The free training sessions are sponsored by GTRI and the Georgia Manufacturing Extension Alliance (GMEA). Anyone may attend a session: Feb. 13 - Savannah Tech; Feb. 27 - Dalton College; Feb. 29 - Augusta Tech; March 27 - Georgia Tech; and March 28 - Macon College. To register, or for more information, you may call Diane Smith at 894-0024.

The GTRI Connector
Vol. 12 No. 4 February 1996

Published by the Research Communications Office, Centennial Research Building, Georgia Institute of Technology, Atlanta, GA 30332. Georgia Tech is a unit of the University System of Georgia. The deadline for submitting copy is the first Tuesday of each month.

EDITOR

Lea McLees, RCT
853-9079

GRAPHIC DESIGN

Charlotte Doughty, RCT
894-6965

EDITORIAL REVIEW

Charles Brown, RSF
894-3516

ASSOCIATE EDITORS

Miriam Crenshaw, ERB
894-3523

Ann Duneheew, ELSYS
894-3592

Carey Floyd, Cobb 1
528-7070

Delora Gould, SSD
894-3408

Maggi Harrison, Cobb 2
528-7826

Lee Hughey, AIST
894-9621

Joanna King, Baker
853-0460

Diane Smith, O'Keefe
894-0024

Janice Porter, VPDIR
894-3401

Melanie Price, SEAL
528-7915

Jennifer Tate, RSD
528-7808

Gail Tucker, RSF
894-3500



This publication is printed in part on recycled paper.